

Research

Open Access

Effect of rosiglitazone on progression of atherosclerosis: insights using 3D carotid cardiovascular magnetic resonance

Anitha Varghese^{†1,2}, Michael S Yee^{†3,4}, Cheuk F Chan^{1,2}, Lindsey A Crowe¹, Niall G Keenan^{1,2}, Desmond G Johnston^{3,4} and Dudley J Pennell^{*1,2}

Address: ¹National Heart and Lung Institute, Imperial College, London, UK, ²Cardiovascular Magnetic Resonance Unit, Royal Brompton Hospital, London, UK, ³Division of Medicine, Imperial College, London, UK and ⁴Department of Diabetes, Imperial College Health Care NHS Trust, London, UK

Email: Anitha Varghese - A.Varghese@rbht.nhs.uk; Michael S Yee - m.yee@imperial.ac.uk; Cheuk F Chan - C.Chan@rbht.nhs.uk; Lindsey A Crowe - lindsey.crowe@talk21.com; Niall G Keenan - N.Keenan@rbht.nhs.uk; Desmond G Johnston - d.johnston@imperial.ac.uk; Dudley J Pennell* - d.pennell@ic.ac.uk

* Corresponding author †Equal contributors

Published: 27 July 2009

Received: 13 January 2009

Journal of Cardiovascular Magnetic Resonance 2009, **11**:24 doi:10.1186/1532-429X-11-24

Accepted: 27 July 2009

This article is available from: <http://www.jcmr-online.com/content/11/1/24>

© 2009 Varghese et al; licensee BioMed Central Ltd.

This is an Open Access article distributed under the terms of the Creative Commons Attribution License (<http://creativecommons.org/licenses/by/2.0>), which permits unrestricted use, distribution, and reproduction in any medium, provided the original work is properly cited.

Abstract

Background: There is recent evidence suggesting that rosiglitazone increases death from cardiovascular causes. We investigated the direct effect of this drug on atheroma using 3D carotid cardiovascular magnetic resonance.

Results: A randomized, placebo-controlled, double-blind study was performed to evaluate the effect of rosiglitazone treatment on carotid atherosclerosis in subjects with type 2 diabetes and coexisting vascular disease or hypertension. The primary endpoint of the study was the change from baseline to 52 weeks of carotid arterial wall volume, reflecting plaque burden, as measured by carotid cardiovascular magnetic resonance. Rosiglitazone or placebo was allocated to 28 and 29 patients respectively. Patients were managed to have equivalent glycemic control over the study period, but in fact the rosiglitazone group lowered their HbA1c by 0.88% relative to placebo ($P < 0.001$). Most patients received a statin or fibrate as lipid control medication (rosiglitazone 78%, controls 83%). Data are presented as mean \pm SD. At baseline, the carotid arterial wall volume in the placebo group was 1146 ± 550 mm³ and in the rosiglitazone group was 1354 ± 532 mm³. After 52 weeks, the respective volumes were 1134 ± 523 mm³ and 1348 ± 531 mm³. These changes (-12.1 mm³ and -5.7 mm³ in the placebo and rosiglitazone groups, respectively) were not statistically significant between groups ($P = 0.57$).

Conclusion: Treatment with rosiglitazone over 1 year had no effect on progression of carotid atheroma in patients with type 2 diabetes mellitus compared to placebo.

Background

The prevalence of diabetes is increasing exponentially worldwide, and type 2 diabetes accounts for 90% of cases [1]. Insulin resistance is a fundamental feature of type 2 diabetes and is associated with increased cardiovascular

risk, which accounts for up to 80% of deaths in these patients [2,3]. The United Kingdom Prospective Diabetes Study (UKPDS) demonstrated that intensive blood glucose control with insulin or sulphonylurea in type 2 diabetic patients had only a limited effect on the incidence of

cardiovascular events, indicating the necessity for new treatment strategies [4].

The thiazolidinediones are a class of oral hypoglycemic drugs which have gained rapid and widespread acceptance into clinical practice. Their pharmacological action is through the reduction of insulin resistance by sensitizing muscle, liver, and adipose tissue to insulin, and treatment is associated with delayed progression to type 2 diabetes [5,6]. Their agonist effect is mediated by peroxisome proliferator activated receptor gamma (PPAR γ), a nuclear hormone receptor, with effects on carbohydrate and lipid metabolism, fat cell differentiation, and gene regulation similar to those seen when insulin combines with its receptor [7]. Two glitazones are available for clinical use: pioglitazone and rosiglitazone. Both have been shown to lower hemoglobin A_{1c} (HbA_{1c}) to a similar extent but they have distinct lipid modulation properties [8]. Both drugs raise high-density lipoprotein cholesterol (HDLc), but pioglitazone reduces triglyceride levels while rosiglitazone has shown either no consistent change or an increase in levels. Additionally, low-density lipoprotein cholesterol (LDLc) concentration is contentious [8,9], studies have generally suggested a reduction with pioglitazone, but an increase with rosiglitazone, although the shift from small dense LDLc to a large buoyant phenotype may be less atherogenic [10].

The beneficial effect of rosiglitazone on plaque progression has been shown in animal and human subjects [11-13]. In a study of 92 sub-optimally controlled type 2 diabetic patients who were randomised to either metformin or rosiglitazone treatment, Stoker et al demonstrated that there was a significant reduction in carotid intima-media thickness (IMT) after 24 weeks in the rosiglitazone group [14]. Additionally, the effect of rosiglitazone on carotid intima-media thickness (IMT) over 12 months was studied in patients with type 2 diabetes and the insulin resistance syndrome and no statistically significant difference from placebo was shown [15]. However, this study suggested that rosiglitazone may have a beneficial effect in overt diabetes compared with the pre-diabetic group.

Carotid IMT is an important surrogate marker of cardiovascular risk and there is a linear relationship between this measure and the angiographic presence and severity of coronary artery disease [16-21]. Therapeutic intervention with antiplatelet agents, angiotensin-converting enzyme (ACE) inhibitors, β -blockers, and statins prevent progression of carotid IMT and have been shown to favorably impact on cardiovascular morbidity and mortality [22-25]. Of these, the most potent drugs are the statins [20,26].

High-resolution carotid cardiovascular magnetic resonance (CMR) is a comparatively new tool for the assess-

ment of carotid atheroma which evaluates arterial wall remodeling in a 3-dimensional (3D) manner with good reproducibility in carotid disease of 4.4%, which allows small sample sizes [27,28]. For example, CMR showed atheroma regression using simvastatin in only 18 asymptomatic hypercholesterolaemic patients, with carotid CMR alone demonstrating a reduction of 15% in carotid vessel wall area after 1 year of statin use [14,29]. We performed a placebo-controlled, double-blind 3D carotid CMR study to evaluate the effect of rosiglitazone on atherosclerosis burden in patients with type 2 diabetes mellitus.

Methods

This was a randomized, placebo-controlled, double-blind study in patients with type 2 diabetes and coexisting vascular disease or hypertension. After completing a 4–8 week single-blind placebo run-in period, eligible subjects entered a 52 week double-blind treatment period during which they received either rosiglitazone (4 mg once daily for the first 12 weeks and then 4 mg twice daily for the remainder of the study) or placebo. Randomization was performed in a 1:1 manner to the rosiglitazone or placebo treatment group using the Registration and Medication Ordering System (RAMOS), and stratified by statin or fibrate use without distinction between the two.

Eligible patients were those with type 2 diabetes, aged between 30–75 years, HbA_{1c} <10% at screening who had been treated with diet and exercise alone or metformin or a sulphonylurea and had been stable prior statin or fibrate dosage (for at least 3 months), and at least one atheromatous plaque causing 10–95% narrowing by ultrasound of the internal carotid artery. Exclusion criteria included more than two concomitant oral anti-hyperglycemic agents (i.e. oral combination) within 3 months of the screening visit or requirement for insulin. In total, 57 subjects were entered into the placebo run-in phase of the study and were subsequently randomized to receive double-blind medication in addition to background anti-diabetic therapy: 28 to rosiglitazone and 29 to placebo. The study protocol defined targets for glucose control during the study to achieve equivalent glycaemic control between the groups. Following randomization, 3 patients did not enter the treatment phase in the rosiglitazone arm. One subject was not suitable for CMR and was not entered into the safety population. Two subjects were subsequently not entered into the intention to treat population (ITT) because of withdrawal of consent (1), and loss to follow-up (1). Twenty-one patients in the rosiglitazone group and 26 patients in the placebo group went on to complete both the baseline and 52 week CMR scans (figure 1).

The study was conducted in accordance with good clinical practice guidelines, all applicable regulatory requirements, the guiding principles of the Declaration of Hel-

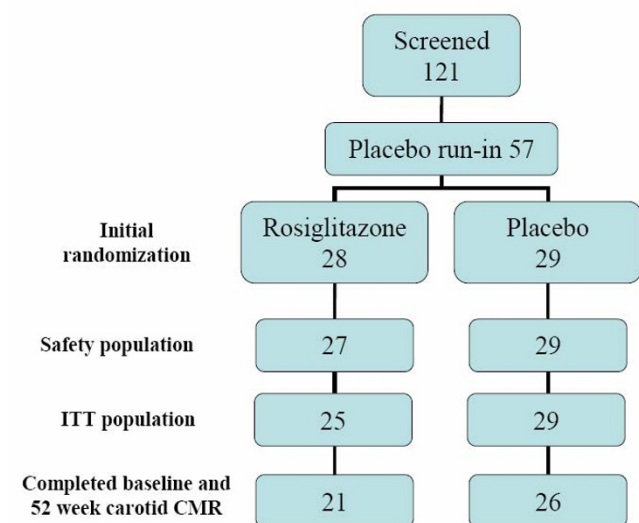


Figure 1
Patient recruitment, randomization and completion. ITT – Intention to treat.

sinki, and was approved by the ethics committee. Subjects gave written informed consent. The primary endpoint of the study was total carotid atherosclerosis volume, as measured by carotid CMR arterial wall volume, following 52 weeks oral treatment with rosiglitazone compared to placebo.

Carotid CMR at baseline and week 52 was performed on a 1.5 Tesla scanner (Sonata, Siemens, Erlangen, Germany) with purpose-built bilateral four channel phased-array surface carotid coils (Machnet BV, The Netherlands), and a specially designed head and neck cushion with air-extraction for immobilization. Subjects were scanned in the supine position with the carotid coils in the magnet isocentre. T1 weighted 3D black-blood acquisitions were obtained predominantly unilaterally on the side of known carotid narrowing in all patients, and if possible bilaterally. Bilateral acquisitions were attempted if there was confirmed bilateral carotid artery disease, adequate image quality, and subjects could tolerate the additional imaging period. Typical sequence parameters were: matrix size = 256, 0.47 mm × 0.47 mm pixels; 28 slices of 2 mm thickness; typical field-of-view = 120 mm × 24 mm; time to echo = 11 ms; repetition time according to a single multiple of the subject's R-R interval; echo train length = 11; fat suppression; and 650 ms inversion time following double inversion preparation pulse during free-breathing. Acquisitions took between 2 – 4 minutes. The region chosen for all measurements were centered either side of the carotid bifurcation, extending 28 mm in both directions to give 56 mm of total vessel coverage. All scans for analysis were made perpendicular to the long-axis of the carotid artery.

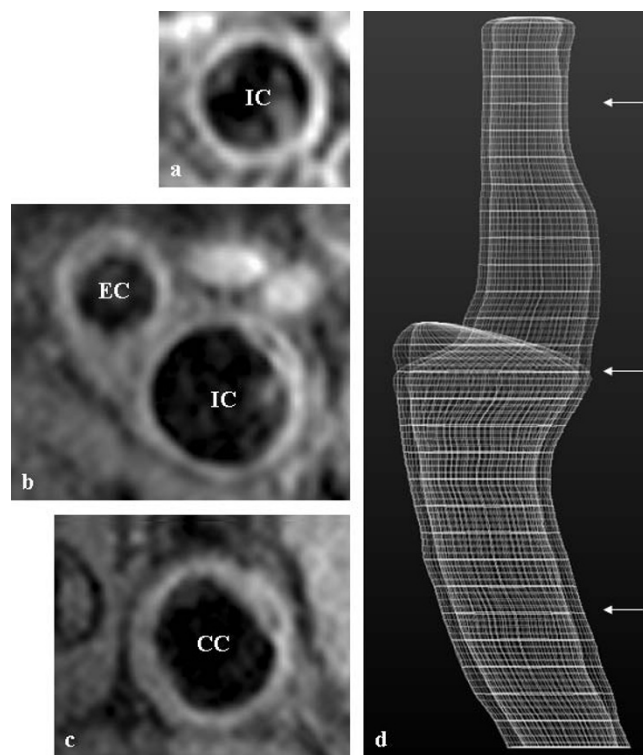


Figure 2
Baseline high-resolution left carotid CMR performed on a 63 year old male study participant at the level of the a) internal carotid artery, b) carotid artery bifurcation, and c) common carotid artery, with the corresponding levels (arrowed) on the 3D model shown in d). CC – common carotid artery, IC – internal carotid artery, EC – external carotid artery.

The total carotid artery wall volume was calculated by subtracting total carotid luminal volume from the total vessel wall volume using semi-automated contouring software named Atheroma-Tools, (a plug-in of CMRtools, Cardiovascular Imaging Solutions, London, UK) [30]. This software models the 3D vessel with only minimal assistance from the operator (figure 2), and has been shown to facilitate greater vessel coverage than manual delineation. Contouring was performed by a single observer (AV).

Statistical analysis was performed by GlaxoSmithKline (GSK) from raw blinded information. CMR endpoints were collected separately for the left and right carotid arteries and summed for analysis where indicated. Data analysis was by ITT on the patients who were randomized, received at least one dose of medication, and had at least one post-baseline value for at least one efficacy parameter (rosiglitazone 25, placebo 29). The safety population comprised 27 patients on rosiglitazone and 29 on placebo. Summary data are presented as mean ± SD with separate calculations for each stratum within each treatment group for the total carotid wall volume at 52 weeks. The

adjusted mean treatment difference between rosiglitazone and placebo is presented with a 95% two-sided CI and associated P value, with the change in total carotid wall volume from baseline to end of treatment being analyzed using parametric analysis of covariance (ANCOVA). Sample size calculations had shown that with 30 subjects per group, the study had 90% power to detect a relative effect size of 0.85.

Results

Study population and safety profile

The demographic profile for all subjects who had received at least one dose of study medication (safety population) is summarized in table 1, and the baseline lipid lowering

and anti-hypertensive medication in table 2. At baseline, the proportion of subjects who had received previous lipid-lowering or anti-hypertensive medication was slightly lower in the rosiglitazone arm and this trend was maintained at 52 weeks. Statin use at baseline was 67% (n = 18) in the rosiglitazone group and 83% (n = 24) in the placebo group (p = 0.221). By study termination, the corresponding values were 70% (n = 19) for rosiglitazone and 93% (n = 27) for placebo (p = 0.038).

A serious adverse event was defined as any event which was fatal, life threatening, disabling or incapacitating, resulted in hospitalization or prolonged a hospital stay, or was associated with a congenital abnormality or birth

Table 1: Demographic characteristics of safety population

N (%)	Rosiglitazone (N = 27)	Placebo (N = 29)	Total (N = 56)	P value
Gender				
Male	21 (78%)	23 (79%)	44 (79%)	P = 0.85
Female	6 (22%)	6 (21%)	12 (21%)	P = 0.85
Age (years)				
Mean ± SD	62.2 ± 8.2	65.6 ± 6.1	63.9 ± 7.4	P = 0.072
Median	65.0	66.0	65.0	
Range	38 – 74	55 – 75	38 – 75	
Race				
White	17 (63%)	18 (62%)	35 (63%)	P = 0.84
Black	3 (11%)	4 (14%)	7 (13%)	P = 1.00
Oriental	1 (4%)	0	1 (2%)	P = 0.48
Other	6 (22%)	7 (24%)	13 (23%)	P = 0.88
	Asian-4, Bangladeshi-1, Brazilian-1	Asian-4, Bangladeshi-1, Indian-1, Yemeni-1		
Statin/fibrate use				
Yes	21 (78%)	24 (83%)	45 (80%)	P = 0.90
No	6 (22%)	5 (17%)	11 (20%)	P = 0.89
Smoking history				
Never	6 (22%)	12 (41%)	18 (32%)	P = 0.21
Former	16 (59%)	13 (45%)	29 (52%)	P = 0.42
Current	5 (19%)	4 (14%)	9 (16%)	P = 0.73
Number of years smoked ¹				
Mean ± SD	33.5 ± 12.7	34.3 ± 14.8	33.9 ± 13.5	P = 0.83
Median	32.0	39.0	34.0	
Range	7 – 63	7 – 56	7 – 63	
Number of cigarettes per day ¹				
Mean ± SD	22.9 ± 21.5	21.7 ± 13.8	22.3 ± 18.2	P = 0.80
Median	20.0	20.0	20.0	
Range	3 – 100	3 – 60	3 – 100	
Weight (kg)				
Mean ± SD	78.1 ± 13.8	81.8 ± 14.1	80.0 ± 13.9	P = 0.59
Median	77.4	80.5	79.0	
Range	60.5 – 117.4	56.0 – 116.2	56.0 – 117.4	
Height (cm)				
Mean ± SD	167.3 ± 8.8	169.0 ± 6.2	168.2 ± 7.6	P = 0.40
Median	170.0	169.0	169.0	
Range	151 – 187	157 – 179	151 – 187	
BMI (kg/m ²)				
Mean ± SD	27.9 ± 4.1	28.6 ± 4.3	28.3 ± 4.2	P = 0.77
Median	27.9	28.5	28.0	
Range	22.4 – 39.2	20.6 – 37.1	20.6 – 39.2	

1. Data only for current and former smokers (rosiglitazone group-21; placebo group-17).

Table 2: Baseline lipid-lowering and anti-hypertensive medications

N (%)	Rosiglitazone (N = 27)	Placebo (N = 29)	P value
Any such medication	26 (96%)	29 (100%)	
Lipid-Lowering Medication	21 (78%)	24 (83%)	P = 0.89
Statin	18 (67%)	24 (83%)	
Fibrate	3 (11%)	2 (7%)	
Other lipid-lowering agents	1 (4%)	1 (3%)	
Anti-Hypertensive Medication	24 (89%)	29 (100%)	P = 0.23
Diuretic	13 (48%)	10 (34%)	
ACE inhibitor	12 (44%)	16 (55%)	
Calcium channel antagonist	11 (41%)	19 (66%)	
Beta-blocker	9 (33%)	14 (48%)	
Alpha-blocker	4 (15%)	8 (28%)	
Angiotensin 2 antagonist	2 (7%)	3 (10%)	

NB Some subjects had been prescribed more than one lipid-lowering or anti-hypertensive medication.

defect. Additionally, any event which the investigator regarded as serious or which would suggest any significant hazard, contraindication, side effect or precaution that may have been associated with the use of the drug was documented as a serious event. Two subjects in the rosiglitazone arm (7%; worsening of myocardial ischaemia and angina) and one subject in the placebo group (3%; angina) had cardiac ischemic events. There were two reports of congestive cardiac failure, both in the rosiglitazone group. Two subjects in each group had edema. There were no deaths during the study. Compliance with study tablets, measured as taking 80 – 120% of medication, was 85% for rosiglitazone and 97% for placebo ($p = 0.185$).

Glycemia and lipid profile

At the end of treatment, there was a significant change from baseline in HbA_{1c} in the rosiglitazone group compared with the placebo group (-0.88%, $P < 0.001$). The changes from baseline in lipid parameters by end of treatment are shown in table 3.

Changes in total carotid arterial wall volume

The change in carotid arterial wall volume from baseline to week 52 is summarized in table 4. At baseline, the carotid wall volume in the placebo group was 1146 ± 550 mm³ and in the rosiglitazone group was 1354 ± 532 mm³. After 52 weeks, the respective carotid wall volumes were 1134 ± 523 mm³ and 1348 ± 531 mm³, which was a mean decrease from baseline of 12.1 mm³ and 5.7 mm³. These changes were small (<1%) and not statistically significant between groups ($P = 0.57$).

Discussion

This study demonstrated that rosiglitazone had no significant effect on carotid atheroma compared with placebo over 52 weeks. This is in contrast to Stocker's study [13],

where they showed a significant change in the maximal and mean carotid IMT between the rosiglitazone and metformin groups. Pioglitazone has also been shown to reduce carotid IMT, independently of glycemic control in type 2 diabetes, even over 12 weeks of treatment [31]. Beneficial effects for PPAR γ agonists were also shown in rabbits using CMR of the aorta [32]. Atherosclerosis was induced by double-balloon injury and a 9 month high-cholesterol diet and the rabbits were then randomized into 5 groups: continued high-cholesterol diet, normal-chow diet, normal-chow diet plus simvastatin, normal-chow plus L-805645 (a selective PPAR γ agonist), and normal-chow plus simvastatin plus L-805645. Plasma cholesterol levels remained elevated in the high-cholesterol diet group but fell to similar levels in the other groups, regardless of treatment. Normalization of lipid levels in the normal-chow group halted the atheroma progression seen in the high-cholesterol group, but did not induce regression. Regression was only achieved in the groups receiving simvastatin, with the greatest effect in the group on both drug therapies. However, use of the PPAR γ agonist alone had no significant effect on atheroma reduction, but did not cause progression. These findings suggested an additive anti-atherogenic effect of a statin and PPAR γ agonist in the presence of a neutral lipid profile.

Recent meta-analyses suggesting an increased risk of myocardial infarction using rosiglitazone have had a negative impact on the clinical use of thiazolidinediones in type 2 diabetes, especially rosiglitazone [33,34], despite ongoing debate and the inconclusive interim report from the Rosiglitazone Evaluated for Cardiac Outcomes and Regulation of Glycemia in Diabetes (RECORD) study [35]. Our data demonstrate that rosiglitazone had no significant effect on carotid atheroma compared with placebo over 52 weeks. These findings mirror data regarding pioglitazone

Table 3: Lipid profile changes in the ITT population.

Lipid parameter (mmol/L)		Rosiglitazone (N = 25)	Placebo (N = 29)
Total Cholesterol			
Baseline	geometric mean	4.14	4.36
	(-SE, +SE)	3.97, 4.33	4.15, 4.58
End of treatment	geometric mean	4.13	4.17
	(-SE, +SE)	3.97, 4.29	3.97, 4.37
% Change	geometric mean	-0.5	-4.5
	(-SE, +SE)	-3.24, 2.40	-8.00, -0.85
P value		0.42	
HDLc			
Baseline	geometric mean	1.10	1.14
	(-SE, +SE)	1.04, 1.15	1.06, 1.22
End of treatment	geometric mean	1.16	1.22
	(-SE, +SE)	1.09, 1.22	1.15, 1.29
% Change	geometric mean	5.4	7.2
	(-SE, +SE)	1.41, 9.55	3.35, 11.1
P value		0.97	
LDLc			
Baseline	geometric mean	2.22	2.31
	(-SE, +SE)	2.07, 2.37	2.16, 2.47
End of treatment	geometric mean	2.23	2.13
	(-SE, +SE)	2.10, 2.36	1.98, 2.28
% Change	geometric mean	0.4	-7.9
	(-SE, +SE)	-4.07, 5.10	-12.7, -2.82
P value		0.24	
Triglycerides			
Baseline	geometric mean	1.61	1.67
	(-SE, +SE)	1.50, 1.72	1.52, 1.84
End of treatment	geometric mean	1.35	1.48
	(-SE, +SE)	1.24, 1.47	1.36, 1.61
% Change	geometric mean	-16.0	-11.6
	(-SE, +SE)	-22.4, -9.13	-18.1, -4.65
P value		0.70	
Free fatty acids			
Baseline	geometric mean	0.58	0.56
	(-SE, +SE)	0.55, 0.62	0.53, 0.59
End of treatment	geometric mean	0.46	0.60
	(-SE, +SE)	0.42, 0.50	0.57, 0.64
% Change	geometric mean	-20.7	7.8
	(-SE, +SE)	-28.00, -12.6	2.86, 12.9
P value		0.0050	

There were no significant between groups differences

% Change based on log-transformed data: $100 * [\exp(\text{mean change on log scale}) - 1]$.

zone as assessed by coronary intravascular ultrasound (IVUS) [36]. Therefore, there is comparable data for pioglitazone and rosiglitazone, but contradictory histopathological data for L-805645.

Individual lipid pharmacokinetics may explain these differential results between drugs [37-39]. The ADOPT study showed that rosiglitazone raised LDLc compared to metformin, necessitating a greater use of lipid-lowering ther-

apy [40]. In our study cohort, statin use was greater in the placebo group, which may have confounded our results, given the known anti-atherosclerotic effects of statins. Measured lipid parameters showed that values for HDLc increased and triglycerides decreased in both treatment groups, but there were small decreases at week 52 in total cholesterol and LDLc in the placebo group but little change in the rosiglitazone group.

Table 4: Carotid CMR total wall volume changes in the ITT population

Week 52 (mm ³)	Treatment Group	
	Rosiglitazone (N = 25)	Placebo (N = 29)
Number with baseline and week 52 CMR scans	21	26
Baseline (mean ± SD)	1354 ± 532	1146 ± 550
End of treatment (mean ± SD)	1348 ± 531	1134 ± 523
Change from baseline		
mean ± SD	-5.7 ± 79.4	-12.1 ± 104.6
Model adjusted change from baseline ¹		
mean ± SE	12.7 ± 22.8	-2.9 ± 20.9
Difference from placebo ¹		
mean	15.7	-
95% CI	-39.5, 70.9	-
P-value	0.57	-

1. Adjusted for stratum + baseline value + treatment.

Two coronary IVUS studies are of interest with regard to our study findings [41,42]. The REVERSAL trial quantified intracoronary atheroma volume following 18 months of treatment with 40 mg pravastatin versus 80 mg of atorvastatin. The moderate lipid-lowering regimen using pravastatin led to an increase in coronary atherosclerosis, while the intensive regime with atorvastatin showed absence of plaque progression over that same time period. In the ASTEROID trial, 24 months of high intensity rosuvastatin treatment (40 mg) for 24 months was needed to demonstrate coronary plaque volume reduction. This IVUS data highlights that the absence of regression of carotid atheroma over 52 weeks using rosiglitazone in the context of established lipid-lowering management is not unexpected. Also, longer study duration with more subjects would have been optimal, with repeat carotid CMR at 24 months. Our initial power calculations required 30 subjects in each arm to identify a relatively large treatment effect. However as the carotid atheroma volume changes were smaller than predicted our study was relatively underpowered and a 24 month carotid CMR may clarify the trend noted in carotid plaque volume between placebo and drug treatment. However, our findings are in line with recent data from the APPROACH study. This randomized 672 type 2 diabetic patients to either the sulfonylurea glipizide or rosiglitazone for 18 months and evaluated coronary atheroma using IVUS. These investigators found that rosiglitazone did not lead to atheroma progression or regression compared to glipizide.

Increased plaque volume is only one component of the propensity of plaque to rupture. In vivo, serial, noninvasive carotid CMR quantification of atheroma over one year reflects changes in overall plaque burden and individual plaque constituents such as smooth muscle cells, and collagen [35,43]. More detailed plaque interrogation is possible with both IVUS and CMR, and such data would

provide important additional insights into the possible increased risk [37].

Conclusion

In conclusion, 52 weeks of treatment with rosiglitazone had no effect on progression of carotid atheroma volume in patients with type 2 diabetes mellitus compared to placebo. Increased cardiovascular risk attributed to rosiglitazone cannot simply be related to increased atherosclerotic burden, and other potential mechanisms need to be considered. The adverse effects of the thiazolidinediones need to be balanced against their benefits and there should be caution with the use of surrogate markers for hard clinical end-points [44-46].

Competing interests

AV, MSY, CFC, LAC, NGK, DJ- The authors declare that they have no competing interests.

DJP- Consultancy Siemens, Novartis and Research Support Siemens, Novartis, Director Cardiovascular Imaging Solutions

Authors' contributions

AV- main manuscript author, acquisition of data, data analysis. MSY-patient recruitment and coordination of study, helped to draft the manuscript, data analysis. CFC-helped to draft the manuscript, data analysis. NGK, LAC-contributed to manuscript, acquisition of data. DJ-patient recruitment, participated in the study design and coordination, helped to draft the manuscript. DJP-conceived the study, participated in the study design and coordination, helped to draft the manuscript

References

- Zimmet P, Alberti KG, Shaw J: **Global and societal implications of the diabetes epidemic.** *Nature* 2001, **414**:782-87.

2. Barnett AH, O'Gara G: **Diabetes and the heart**. London: Churchill Livingstone; 2003.
3. Kirpichnikov D, Sowers JR: **Diabetes mellitus and diabetes-associated vascular disease**. *Trends Endocrinol Metab* 2001, **12**:225-30.
4. UK Prospective Diabetes Study (UKPDS) Group: **Intensive blood-glucose control with sulphonylureas or insulin compared with conventional treatment and risk of complications in patients with type 2 diabetes (UKPDS 33)**. *Lancet* 1998, **352**:837-53.
5. Yki-Jarvinen H: **Thiazolidinediones**. *N Engl J Med* 2004, **351**:1106-18.
6. **The DREAM (Diabetes REduction Assessment with ramipril and rosiglitazone Medication) Trial Investigators**. **Effect of rosiglitazone on the frequency of diabetes in patients with impaired glucose tolerance or impaired fasting glucose: a randomised controlled trial**. *Lancet* 2006, **368**:1096-105.
7. Berger JP, Akiyama TE, Meinke PT: **PPARs: therapeutic targets for metabolic disease**. *Trends Pharmacol Sci* 2005, **26**:244-51.
8. Goldberg RB, Kendall DM, Deeg MA, Busse JB, Zagar AJ, Pinaire JA, Tan MH, Khan MA, Perez AT, Jacober SJ: **For the GLAI Study Investigators**. **A comparison of lipid and glycemic effects of pioglitazone and rosiglitazone in patients with type 2 diabetes and dyslipidemia**. *Diabetes Care* 2005, **28**:1547-54.
9. Winkler K, Friedrich I, Baumstark MW, Wieland H, Marz W: *Bj Diab and Vasc Dis* 2002, **2**:143-8.
10. Freed MI, Ratner R, Marcovina SM, Kreider MM, Biswas N, Cohen BR, Brunzell JD: **Rosiglitazone Study 108 investi**. *Am J Cardiol* 2002, **90**:947-52.
11. Levi Z, Shaish A, Yacov N, Levkovitz H, Trestman S, Gerber Y, Cohen H, Dvir A, Rhachmani R, Ravid M, Harats D: **Rosiglitazone (PPAR-gamma-agonist) attenuates atherogenesis with no effect on hyperglycaemia in a combined diabetes-atherosclerosis mouse model**. *Diabetes Obes Metab* 2003, **5**:45-50.
12. Calkin AC, Forbes JM, Smith CM, Lassila M, Cooper ME, Jandeleit-Dahm KA, Allen TJ: **Rosiglitazone attenuates atherosclerosis in a model of insulin insufficiency independent of its metabolic effects**. *Arterioscler Thromb Vasc Biol* 2005, **25**:1903-9.
13. Stocker DJ, Taylor AJ, Langley RW, Jezior MR, Vigersky RA: **A randomized trial of the effects of rosiglitazone and metformin on inflammation and subclinical atherosclerosis in patients with type 2 diabetes**. *Am Heart* 2007, **155**:e1-445.
14. Corti R, Fuster V, Fayad ZA, Worthley SG, Helft G, Smith D, Weinberger J, Wentzel J, Mizsei G, Mercuri M, Badimon JJ: **Lipid lowering by simvastatin induces regression of human atherosclerotic lesions: two years' follow-up by high-resolution noninvasive magnetic resonance imaging**. *Circulation* 2002, **106**:2884-7.
15. Hedblad B, Zambanini A, Nilsson P, Janzon L, Berglund G: **Rosiglitazone and carotid IMT progression rate in a mixed cohort of patients with type 2 diabetes and the insulin resistance syndrome: main results from the Rosiglitazone Atherosclerosis Study**. *J Intern Med* 2007, **261**:293-305.
16. Bots ML, Hoes AW, Koudstaal PJ, Hofman A, Grobbee DE: **Common carotid intima-media thickness and risk of stroke and myocardial infarction: the Rotterdam Study**. *Circulation* 1997, **96**:1432-7.
17. Touboul PJ, Elbaz A, Koller C, Lucas C, Adrai V, Chedru F, Amarenco P: **Common carotid artery intima-media thickness and brain infarction: the Etude du Profil Genetique de l'Infarctus Cerebral (GENIC) case-control study: the GENIC Investigators**. *Circulation* 2000, **102**:313-8.
18. Salonen JT, Salonen R: **Ultrasonographically assessed carotid morphology and the risk of coronary heart disease**. *Arterioscler Thromb* 1991, **11**:1245-9.
19. Hodis HN, Mack WJ, LaBree L, Selzer RH, Liu CR, Liu CH, Azen SP: **The role of carotid arterial intima-media thickness in predicting clinical coronary events**. *Ann Intern Med* 1998, **128**:262-9.
20. Geroulakos G, O'Gorman DJ, Kalodiki E, Sheridan DJ, Nicolaidis AN: **The carotid intima-media thickness as a marker of the presence of severe symptomatic coronary artery disease**. *Eur Heart J* 1994, **15**(6):781-5.
21. Crouse JR III, Craven TE, Hagan AP, Bond G: **Association of coronary disease with segment-specific intimal-medial thickening of the extracranial carotid artery**. *Circulation* 1995, **92**:1141-7.
22. Kodama M, Yamasaki Y, Sakamoto K, Yoshioka R, Matsuhisa M, Kajimoto Y, Kosugi K, Ueda N, Hori M: **Antiplatelet drugs attenuate progression of carotid intima-media thickness in subjects with type 2 diabetes**. *Thromb Res* 2000, **97**:239-45.
23. Lonn E, Yusuf S, Dzavik V, Doris C, Yi Q, Smith S, Moore-Cox A, Bosch J, Riley W, Teo K: **Effects of ramipril and vitamin E on atherosclerosis: the Study to Evaluate Carotid Ultrasound Changes in patients treated with Ramipril and vitamin E (SECURE)**. *Circulation* 2001, **103**:919-25.
24. Hedblad B, Wikstrand J, Janzon L, Wedel H, Berglund G: **Low-dose metoprolol CR/XL and fluvastatin slow progression of carotid intima-media thickness: main results from the Beta-Blocker Cholesterol-lowering Asymptomatic Plaque Study (BCAPS)**. *Circulation* 2001, **103**:1721-6.
25. De Sauvage Nolting PRW, de Groot E, Zwiderman AH, Buirma RJ, Trip MD, Kastelein JJ: **Regression of carotid and femoral intima-media thickness in familial hypercholesterolaemia: treatment with simvastatin**. *Arch Intern Med* 2003, **163**:1837-41.
26. Smilde TJ, van Wissen S, Wollersheim H, Trip MD, Kastelein JJ, Stalenhoef AF: **Effect of aggressive versus conventional lipid lowering on atherosclerosis progression in familial hypercholesterolaemia (ASAP): a prospective, randomised, double-blind trial**. *Lancet* 2001, **357**:577-81.
27. Varghese A, Crowe LA, Mohiaddin RH, Gatehouse PD, Yang GZ, Firmin DN, Pennell DJ: **Interstudy reproducibility of 3D volume selective fast spin echo sequence for quantifying carotid artery wall volume in asymptomatic subjects**. *Atherosclerosis* 2005, **183**:361-6.
28. Varghese A, Crowe LA, Mohiaddin RH, Gatehouse PD, Yang GZ, Nott DM, McCall JM, Firmin DN, Pennell DJ: **Interstudy reproducibility of three-dimensional volume-selective fast spin echo magnetic resonance for quantifying carotid artery wall volume**. *J Magn Reson Imaging* 2005, **21**:187-91.
29. Corti R, Fayad ZA, Fuster V, Worthley SG, Helft G, Chesebro J, Mercuri M, Badimon JJ: **Effects of lipid-lowering by simvastatin on human atherosclerotic lesions: a longitudinal study by high-resolution, noninvasive magnetic resonance imaging**. *Circulation* 2001, **104**:249-52.
30. Varghese A, Merrifield RD, Crowe LA, Collins SA, Keenan NG, Firmin DN, Yang GZ, Pennell DJ: **Evaluation of carotid artery wall volume measurement using novel semiautomated analysis software**. *J Magn Reson Imaging* 2006, **24**:1401-8.
31. Langenfeld MR, Forst T, Hohberg C, Kann P, Lubben G, Konrad T, Fullert SD, Sachara C, Pflutzner A: **Pioglitazone decreases carotid intima-media thickness independently of glycemic control in patients with type 2 diabetes mellitus: results from a controlled randomized study**. *Circulation* 2005, **111**:2525-31.
32. Corti R, Oscende JL, Fallon JT, Fuster V, Mizsei G, Jneid H, Wright SD, Chaplin WF, Badimon JJ: **The selective peroxisomal proliferators-activated receptor-gamma agonist has an additive effect on plaque regression in combination with simvastatin in experimental atherosclerosis: in vivo study by high-resolution magnetic resonance imaging**. *J Am Coll Cardiol* 2004, **43**:464-73.
33. Nissen SE, Wolski K: **Effect of rosiglitazone on the risk of myocardial infarction and death from cardiovascular causes**. *N Engl J Med* 2007, **356**:2457-71.
34. Singh S, Loke YK, Furberg CD: **Long-term risk of cardiovascular events with rosiglitazone: a meta-analysis**. *JAMA* 2007, **298**:1189-95.
35. Horne PD, Pocock SJ, Beck-Nielson H, Gomis R, Hanefeld M, Jones NP, Komajda M, McMurray JVV, for the RECORD Study Group: **Rosiglitazone evaluated for cardiovascular outcomes: an interim analysis**. *N Engl J Med* 2007, **357**:28-38.
36. Nissen SE, Nicholls SJ, Wolski K, Nesto R, Kupfer S, Perez A, Jure H, De Laroche R, Staniloae CS, Mavromatis K, Saw J, Hu B, Lincoff AM, Tuzcu EM, for the PERISCOPE Investigators: **Comparison of pioglitazone vs glimepiride on progression of coronary atherosclerosis in patients with type 2 diabetes - the PERISCOPE randomized controlled trial**. *JAMA* 2008, **299**:1561-1573.
37. O'Keefe JH Jr, Cordain L, Harris WH, Moe RM, Vogel R: **Optimal low-density lipoprotein is 50 to 70 mg/dl: lower is better and physiologically normal**. *J Am Coll Cardiol* 2004, **43**:2142-6.
38. Nissen SE, Tuzcu EM, Schoenhagen P, Crowe T, Sasiela WJ, Tsai J, Orazem J, Magorien RD, O'Shaughnessy C, Ganz P, for the Reversal of atherosclerosis with Aggressive Lipid lowering (REVERSAL) Inves-

- tigators: **Statin therapy, LDL cholesterol, C-reactive protein, and coronary artery disease.** *N Engl J Med* 2005, **352**:29-38.
39. Robinson AC, Burke J, Robinson S, Johnston DG, Elkeles RS: **The effects of metformin on glycaemic control and serum lipids in insulin-treated NIDDM patients with suboptimal metabolic control.** *Diabetes Care* 1998, **21**:701-5.
 40. Kahn SE, Haffner SM, Heise MA, Herman WH, Holman RR, Jones NP, Kravitz BG, Lachin JM, O'Neill MC, Zinman B, Viberti G: **for the ADOPT Study Group. Glycemic durability of rosiglitazone, metformin, or glyburide monotherapy.** *N Engl J Med* 2006, **355**:2427-43.
 41. Nissen SE, Tuzcu EM, Schoenhagen P, Brown BG, Ganz P, Vogel RA, Crowe T, Howard G, Cooper CJ, Brodie B, Grines CL, DeMaria AN, for the REVERSAL Investigators: **Effect of intensive compared with moderate lipid-lowering therapy on progression of coronary atherosclerosis: a randomized controlled trial.** *JAMA* 2004, **291**:1071-1080.
 42. Nissen SE, Nicholls SJ, Sipahi I, Libby P, Raichlen JS, Ballantyne CM, Davignon J, Erbel R, Fruchart JC, Tardif JC, Schoenhagen P, Crowe T, Cain V, Wolski K, Goormastic T, Tuzcu EM, for the ASTEROID Investigators: **Effect of very high-intensity statin therapy on regression of coronary atherosclerosis: the ASTEROID Trial.** *JAMA* 2006, **295**:1556-1565.
 43. Trogan E, Fayad ZA, Itskovich VV, Aguinaldo JGS, Mani V, Fallon JT, Cheresnev I, Fisher EA: **Serial studies of mouse atherosclerosis by in vivo magnetic resonance imaging detect lesion regression after correction of dyslipidemia.** *Arterioscler Thromb Vasc Biol* 2004, **24**:1714-9.
 44. Tilden DP, Mariz S, O'Bryan-Tear G, Bottomly J, Diamantopoulos A: **A lifetime modelled economic evaluation comparing pioglitazone and rosiglitazone for the treatment of type 2 diabetes mellitus in the UK.** *Pharmacoeconomics* 2007, **25**:39-54.
 45. Lincoff AM, Wolski K, Nicholls SJ, Nissen SE: **Pioglitazone and risk of cardiovascular events in patients with type 2 diabetes mellitus: a meta-analysis of randomized trials.** *JAMA* 2007, **298**:1180-8.
 46. Marx N, Wöhrle J, Nusser T, Walcher D, Rinker A, Hombach V, Koenig W, Höher M: **Pioglitazone reduces neointima volume after coronary stent implantation: a randomized, placebo-controlled, double-blind trial in nondiabetic patients.** *Circulation* 2005, **112**:2792-8.

Publish with **BioMed Central** and every scientist can read your work free of charge

"BioMed Central will be the most significant development for disseminating the results of biomedical research in our lifetime."

Sir Paul Nurse, Cancer Research UK

Your research papers will be:

- available free of charge to the entire biomedical community
- peer reviewed and published immediately upon acceptance
- cited in PubMed and archived on PubMed Central
- yours — you keep the copyright

Submit your manuscript here:
http://www.biomedcentral.com/info/publishing_adv.asp

