

ORAL PRESENTATION

Open Access

# Rapid cardiac T<sub>1</sub> mapping within two heartbeats

Elodie Breton\*, Daniel Kim, Sohae Chung, Leon Axel

From 2011 SCMR/Euro CMR Joint Scientific Sessions  
Nice, France. 3-6 February 2011

## Introduction

Late gadolinium enhancement (LGE) imaging is an important CMR method that can detect salvageable myocardium after myocardial infarction [1-2]. Recently, T<sub>2</sub>-weighted-imaging has gained a significant interest to assess myocardial edema [3]. However, clinical interpretation of T<sub>2</sub>-weighted-imaging could be hindered by surface coil effects which yield non-uniform signals. Multi-point T<sub>1</sub> mapping approaches, such as Modified Look-Locker inversion recovery (MOLLI) [4], have been proposed to measure myocardial T<sub>1</sub>, but, as a multiple heartbeat acquisition, it may be sensitive to cardiac motion and arrhythmia. We propose to develop a 2-second cardiac T<sub>1</sub> mapping pulse sequence for assessment of myocardial edema (pre-contrast) and infarction (post contrast) in patients with acute myocardial infarction.

## Purpose

To develop and validate a cardiac T<sub>1</sub>-mapping technique.

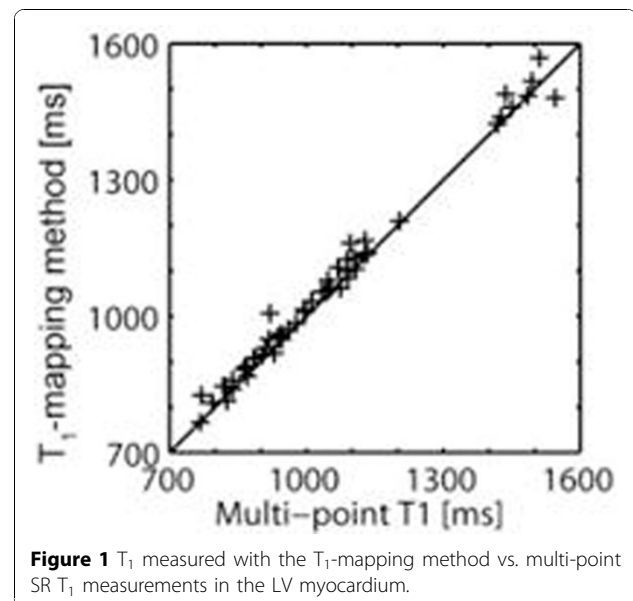
## Methods

The proposed T<sub>1</sub>-mapping acquisition consists of 2 TurboFLASH images with centric k-space ordering: proton density-weighted (PDw) image in the first heartbeat and saturation recovery (SR) T<sub>1w</sub> acquisition in the second heartbeat. A robust non-selective saturation pulse [5] was used to achieve uniform saturation of magnetization. A long delay time=500ms was used to achieve adequate signal-to-noise ratio. The T<sub>1w</sub>-image was normalized by the PDw image to correct for unknown equilibrium magnetization and receiver coil sensitivity. T<sub>1</sub> was calculated algebraically assuming an ideal saturation-recovery equation based on the Bloch equation [6]. Eight healthy volunteers (32±13y.o.) were imaged in a short-axis basal plane at 3T (Tim-Trio, Siemens) at baseline and 10 minutes following 0.05mmol/kg Gd-DTPA injection. All images were acquired in mid-diastole with appropriate

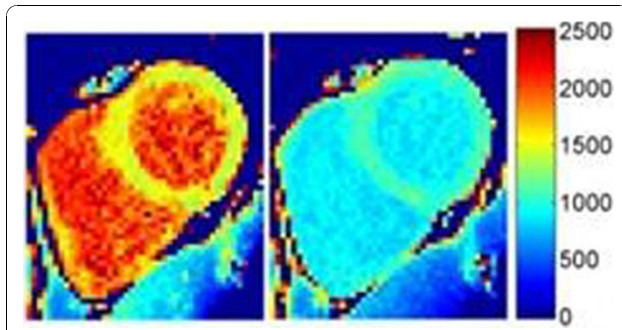
trigger delay. Imaging parameters included: FOV=350mm×272mm, matrix=144×112, TE/TR=1.2/2.4ms, flip angle=10°, in-plane resolution=2.4mm×2.4mm, GRAPPA ~1.65, temporal resolution=162ms, and receiver bandwidth=990Hz/pix. For validation purposes, myocardial T<sub>1</sub> were compared to reference T<sub>1</sub> measurements using multi-point SR with TurboFLASH readout (~20s-breath-hold): 1 PDw-image, 12 T<sub>1w</sub>-images with TD 100to600ms every 100ms, then 800to1800ms every 200ms. A nonlinear Levenberg-Marquardt algorithm was used to fit the normalized multi-point SR data. The proposed T<sub>1</sub>-mapping method was also evaluated in a patient with arrhythmia, before and 20min after administrating 0.15mmol/kg Gd-DTPA.

## Results

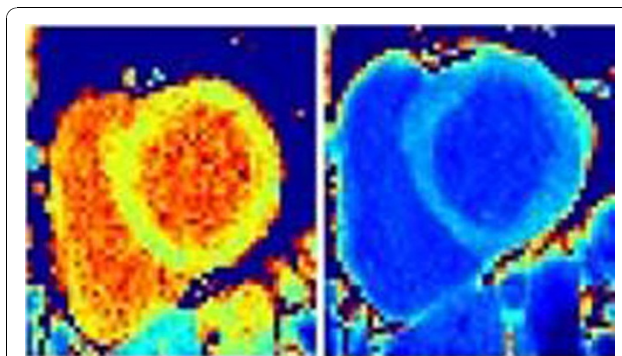
Myocardial T<sub>1</sub> measured using the proposed rapid method were linearly correlated with T<sub>1</sub> measured using the multi-point T<sub>1</sub> method (Fig. 1, slope=0.99,



NYU Langone Medical Center, New York, NY, USA



**Figure 2** T<sub>1</sub>-maps obtained in a volunteer before and 10 min after 0.05mmol/kg bolus injection.



**Figure 3** T<sub>1</sub>-maps obtained in a patient with arrhythmias before and 10 min after 0.15mmol/kg slow injection.

bias=29ms,  $r=0.99$ ,  $P<10^{-5}$ ). Pre- and post-contrast T<sub>1</sub>-maps obtained in a 52y.o.-volunteer and a 44y.o.-patient with arrhythmia are shown in Fig. 2-3, respectively (same T<sub>1</sub>-scale).

## Conclusion

The proposed T<sub>1</sub>-mapping method is a fast pixel-wise T<sub>1</sub>-mapping technique with insensitivity to cardiac motion and arrhythmia. Future work includes evaluation in patients with acute and chronic infarction.

Published: 2 February 2011

## References

1. Kim RJ, *et al*: *NEJM*. 2000, **243**:1445-1453.
2. Kellman P, *et al*: *Magn Reson Med*. 2002, **47**:372-383.
3. Abdel-Aty H, *et al*: *Circulation*. 2004, **109**:2411-2416.
4. Messroghli DR, *et al*: *Magn Reson Med*. 2007, **34**-40.
5. Kim D, *et al*: *Magn Reson Med*. 2009, **62**:1368-1378.
6. Cernicanue A, Axel L: *Acad Radiol*. 2006, **13**:686-693.

doi:10.1186/1532-429X-13-S1-O107

**Cite this article as:** Breton *et al*: Rapid cardiac T1 mapping within two heartbeats. *Journal of Cardiovascular Magnetic Resonance* 2011 **13**(Suppl 1):O107.

**Submit your next manuscript to BioMed Central and take full advantage of:**

- Convenient online submission
- Thorough peer review
- No space constraints or color figure charges
- Immediate publication on acceptance
- Inclusion in PubMed, CAS, Scopus and Google Scholar
- Research which is freely available for redistribution

Submit your manuscript at  
[www.biomedcentral.com/submit](http://www.biomedcentral.com/submit)

 **BioMed Central**