

WORKSHOP PRESENTATION

Open Access

Accelerated fast spin echo diffusion spectrum imaging in the mouse heart ex-vivo

I Teh*, M Lohezic, D Aksentijevic, JE Schneider

From 16th Annual SCMR Scientific Sessions
San Francisco, CA, USA. 31 January - 3 February 2013

Background

Probing the microscale diffusion of water informs on cardiac microstructural features such as cell density and orientation. Diffusion spectrum imaging (DSI) is widely regarded as the gold standard as it measures diffusion in a model-free manner. However, acquisition times are prolonged due to high sampling requirements in q -space. Various methods of reducing acquisition times have been explored, including the use of echo planar imaging [1], and compressed sensing [2,3]. Here we investigate acquiring DSI data using an 8-fold accelerated diffusion-weighted fast spin echo (DW-FSE) pulse sequences versus a diffusion-weighted spin echo (DW-SE) reference.

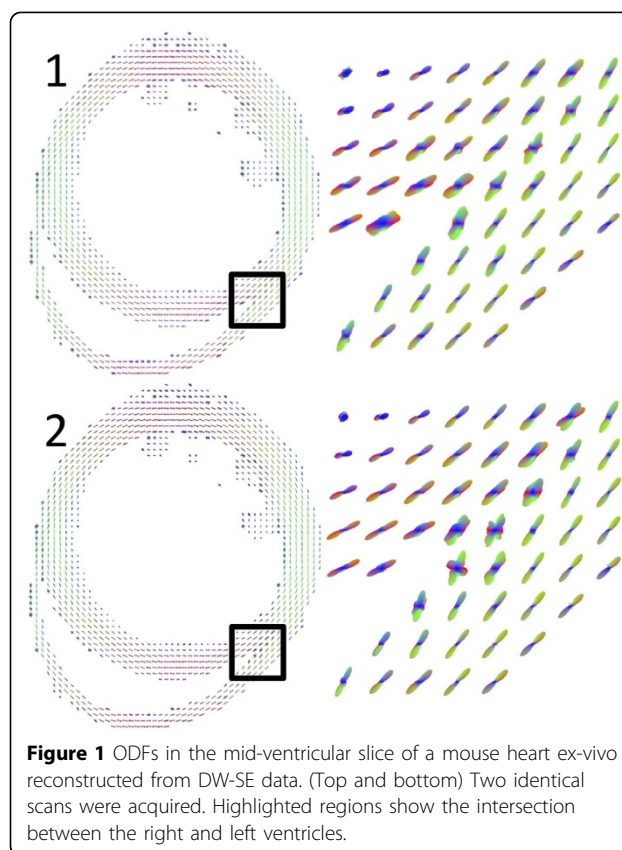
Methods

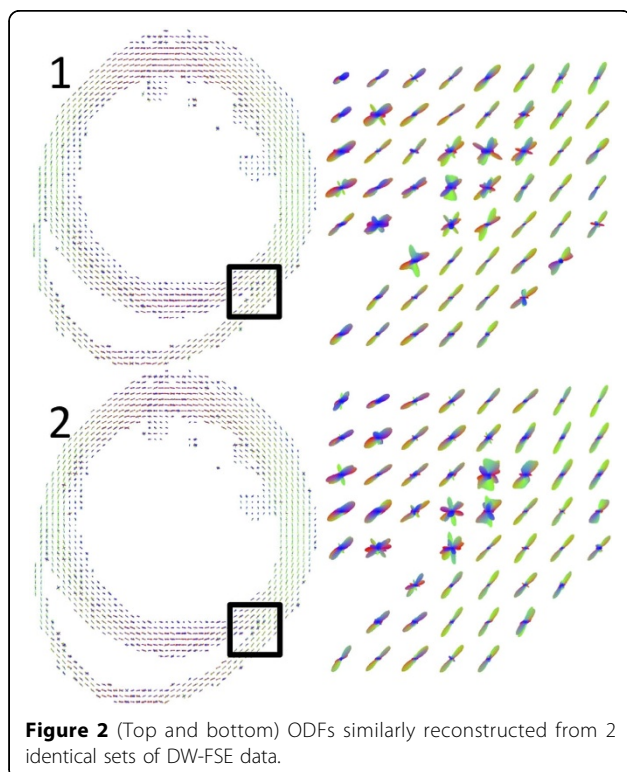
Heart was excised from a C57Bl/6 female mouse ($n=1$), cannulated via the aorta for a brief Langendorff perfusion with Tyrode solution before high-potassium induced cardioplegic arrest. Karnovsky's solution was used to fix the tissue for 24hrs, before embedding in 2% agar. MRI was performed using a 9.4T preclinical scanner (Agilent Technologies, Santa Clara, CA), a shielded gradient system ($G_{max}=1T/m$, rise time=130ms, ID=60mm), and an ID=13mm volume Tx/Rx RF coil. 2D multislice data were acquired with: TR=1500ms, Matrix=96x96, FOV=12x12mm, slices=20, thickness=0.5mm, $G_{max}=900mT/m$, $\delta=2.5ms$, $\Delta=11.26ms$, #B0=26, #diffusion encoding vectors=514, $B_{max}=4000s/mm^2$. Stejskal-Tanner diffusion gradients were applied about the first refocusing pulse. The DW-SE and DW-FSE data were each acquired twice in succession at 21.6hrs and 2.7hrs per scan. An FA map was generated from the DW-SE data, and thresholded at 0.15 to create a mask that was applied to all data. The diffusion probability

density function and orientation distribution function (ODF) were calculated on a voxel-wise basis using Lucy-Richardson deconvolution in Matlab (Mathworks, Natick, MA) [4].

Results

Figure 1 depicts the ODFs in a single mid-ventricular slice in the mouse myocardium from two identical DW-SE scans. These facilitate identification of major cell





doi:10.1186/1532-429X-15-S1-W6

Cite this article as: Teh *et al.*: Accelerated fast spin echo diffusion spectrum imaging in the mouse heart ex-vivo. *Journal of Cardiovascular Magnetic Resonance* 2013 **15**(Suppl 1):W6.

orientations, including the transition in helix angle from the subendocardium to the subepicardium, and the multiple orientations at the intersection of the right and left ventricles. Figure 2 illustrates ODFs similarly reconstructed from DW-FSE data. It shows that the dominant diffusion orientations are preserved, and that there are differences as compared to the DW-SE results, particularly in regions with multiple cell orientations.

Conclusions

We observed that DW-FSE enables 8-fold acceleration, and provides a visually plausible representation of the ODF. Work is in progress to quantify the precision of the measurements. Future work aims to explore complementary methods to accelerate the acquisition, and to validate the DSI parameters with histology.

Funding

EPSRC, UK Grant: EP/J013250/1.

Published: 30 January 2013

References

1. Sosnovik DE, *et al*: *Circ Cardiovasc Imag* 2009.
2. Bilgic B, *et al*: *Magn Reson Med* 2012.
3. Menzel MI, *et al*: *Magn Reson Med* 2011.
4. Canales-Rodríguez EJ, *et al*: *Neuroimage* 2010.

Submit your next manuscript to BioMed Central and take full advantage of:

- Convenient online submission
- Thorough peer review
- No space constraints or color figure charges
- Immediate publication on acceptance
- Inclusion in PubMed, CAS, Scopus and Google Scholar
- Research which is freely available for redistribution

Submit your manuscript at
www.biomedcentral.com/submit

