

ORAL PRESENTATION

Open Access

T1 mapping in severe aortic stenosis: insights into LV remodeling

Thomas A Treibel^{1*}, Marianna Fontana¹, Patricia Reant^{2,1}, Maria A Espinosa^{3,1}, Silvia Castelletti¹, Anna S Herrey¹, Charlotte Manisty¹, Neil Roberts¹, John Yap¹, James Moon¹

From 18th Annual SCMR Scientific Sessions
Nice, France. 4-7 February 2015

Background

Aortic stenosis (AS) appears to be not just a disease of the valve, with adaptive and maladaptive myocardial remodeling playing a key role. Left ventricular (LV) remodeling in AS is characterized by cellular hypertrophy and diffuse myocardial fibrosis. Macroscopic patterns differ between patients: as hypertrophy increases, the pattern changes from normal to concentric remodeling, concentric hypertrophy and finally decompensation. T1 mapping allows non-invasive estimation of diffuse myocardial fibrosis (native T1 and extracellular volume fraction; ECV). We use this methodology to investigate and correlate macroscopic and tissue level patterns of LV remodeling in AS patients prior to aortic valve replacement (AVR) as part of a larger outcome study (RELIEF-AS Study: NCT 02174471).

Methods

135 patients (Age 70 ± 10 years; 53% male) with severe, symptomatic AS (AVA $0.76 \pm 0.26 \text{ cm}^2$; Vmax $4.3 \pm 0.6 \text{ m/sec}$) were recruited prior to AVR. CMR with T1 mapping using ShMOLLI was performed, in addition to the standard pre-operative echocardiographic assessment. LV remodeling was categorized into the 4 patterns (above, Figure 1), defined by LV mass index and the mass:volume ratio as previously described (Dweck MR JCMR 2012).

Results

Patterns of macroscopic LV remodeling were different between genders (Table 1): normal geometry (16% of total; 81% female), concentric remodeling (34% of total;

76% female) concentric hypertrophy (62% of total, 69% male) and decompensation (23% of total; 78% male).

Native T1 and ECV increased with more abnormal patterns of remodeling (ANOVA, $p=0.016$ and $p=0.028$; Table 1), however T1 and ECV levels were gender independent (male vs female $982 \pm 37 \text{ ms}$ vs $989 \pm 39 \text{ ms}$, $p=0.3$; ECV $28 \pm 3\%$ vs $28 \pm 3\%$, $p=0.7$).

Native T1 and ECV correlated with NT-pro-BNP ($R=0.51$ and $R=0.48$, $p<0.001$), although native T1 was a better univariate predictor ($R=0.45$, $p<0.001$ vs $R=0.33$, $p<0.001$). On multivariate analysis, only LVEF, creatinine and native T1 (in order of importance) predicted NT-pro-BNP level: ($R^2=0.75$, $p<0.001$); neither LV mass, EDV, left atrial area nor markers of afterload, diastolic function or AS severity were predictors.

Conclusions

Patients with severe AS remodel differently and the patterns of remodeling appear to be influenced by gender with males more likely to have a hypertrophic response. Both native T1 and ECV track the prognostic markers NT-pro-BNP, with native T1 mapping the better predictor. Native T1 adds prognostic information over traditional echocardiographic markers of AS, suggesting that both macroscopic and microscopic changes contribute to the assessment of AS. We await 1-year post-AVR data from the RELIEF-AS study (due next year).

Funding

This project is supported by a doctoral research fellowship by the National Institute of Health Research (NIHR-DRF-2013-06-102).

¹The Heart Hospital Imaging Centre, University College London, London, UK
Full list of author information is available at the end of the article

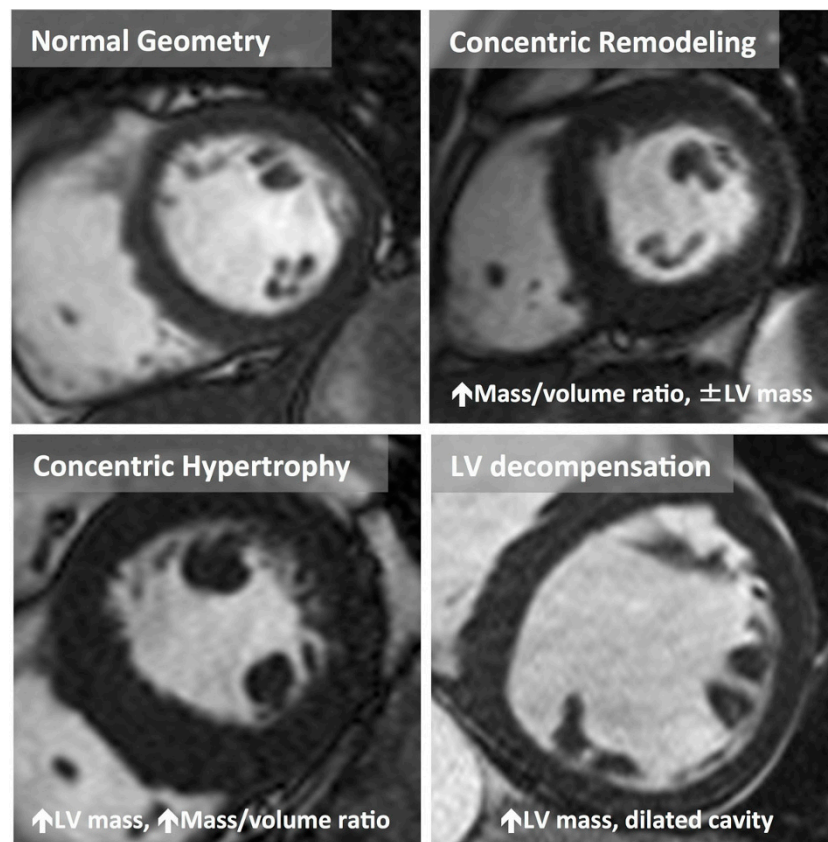


Figure 1 Macroscopic patterns of remodeling differ between patients: as left ventricular (LV) hypertrophy increases, the pattern changes from normal geometry to concentric remodeling (\uparrow LV mass:volume ratio ≥ 1.16), concentric hypertrophy (\uparrow LV mass and \uparrow LV mass:volume ratio ≥ 1.16) and finally decompensation (dilated LV with \uparrow LV mass).

Table 1 Characteristics of patients with different patterns of remodeling

	Normal Geometry	Concentric Remodeling	Concentric Hypertrophy	Decompensation	p-value
Number	16	34	62	23	
Male Sex, %	19	24	69	78	<0.01*
Age, years	72 \pm 9	72 \pm 8	70 \pm 11	67 \pm 10	0.22
Native T1, ms	976 \pm 37	971 \pm 33	988 \pm 38	1002 \pm 42	0.02*
ECV, %	28 \pm 3	27 \pm 2	28 \pm 3	30 \pm 2	0.03*
iAVA, cm ² /m ²	0.4 \pm 0.2	0.4 \pm 0.1	0.4 \pm 0.1	0.4 \pm 0.1	0.75
Vmax, m/sec	4.2 \pm 0.4	4.2 \pm 0.7	4.5 \pm 0.6	4.2 \pm 0.6	0.13
Zva index	3.6 \pm 0.5	4.8 \pm 1.0	3.7 \pm 0.8	3.6 \pm 1.3	<0.01*
NT-pro-BNP	61 \pm 71	83 \pm 120	151 \pm 152	437 \pm 433	<0.01*

Authors' details

¹The Heart Hospital Imaging Centre, University College London, London, UK.

²University of Bordeaux, CHU de Bordeaux, Bordeaux-Pessac, France.

³Gregorio Marañón Hospital, Madrid, Spain.

doi:10.1186/1532-429X-17-S1-O89

Cite this article as: Treibel *et al.*: T1 mapping in severe aortic stenosis: insights into LV remodeling. *Journal of Cardiovascular Magnetic Resonance* 2015 **17**(Suppl 1):O89.