

# T2 values of the acutely infarcted myocardium following primary PCI: the relationship with infarct characteristics and gadolinium extracellular volume of distribution

Elisa McAlindon<sup>1,2\*</sup>, Amardeep Ghosh Dastidar<sup>1</sup>, Nauman Ahmed<sup>1</sup>, Chris B Lawton<sup>1</sup>, Tom Johnson<sup>1</sup>, Julian Strange<sup>1</sup>, Andreas Baumbach<sup>1</sup>, Chiara Bucciarelli-Ducci<sup>1</sup>

From 18th Annual SCMR Scientific Sessions  
Nice, France. 4-7 February 2015

## Background

T2 mapping has been shown to detect myocardial oedema as assessed by histology in animals, and is a promising sequence to detect the area at risk in STEMI. The specific cut off value to identify abnormal myocardium in STEMI has not been identified nor have the effects of infarct characteristics on T2 values. The extracellular volume fraction (ECV) has been validated against histology in humans. The aims of this study were to identify a cut-off T2 for prediction of myocardial oedema following acute reperfusion myocardial infarction and determine if infarct characteristics affect T2 values. In addition, this study aims to determine if T2 values are associated with the ECV following STEMI.

## Methods

50 consecutive patients presenting with STEMI to the Bristol Heart Institute Primary PCI service were approached for inclusion in the study. Patients had a CMR scan day 2 following STEMI. T2 values were assessed by T2 mapping. The myocardium was divided according to the AHA segments. Regional wall motion, LGE transmural, presence of persistent microvascular obstruction (PMVO) and T2 values were assessed per segment. Segments were deemed affected if they did not have normal wall motion. In addition, a further 30 patients had a CMR day 2 following STEMI. Pre-contrast T1, T2 values were assessed. Post contrast T1 was measured at 25 minutes following contrast administration. ECV was calculated as:

Myocardial ECV =  $(1 - \text{hematocrit}) \times (\Delta R1_{\text{myocardium}} / \Delta R1_{\text{blood}})$ , where  $R1 = 1/T1$ . All patients gave written informed consent. The study was approved by the local ethics committee.

## Results

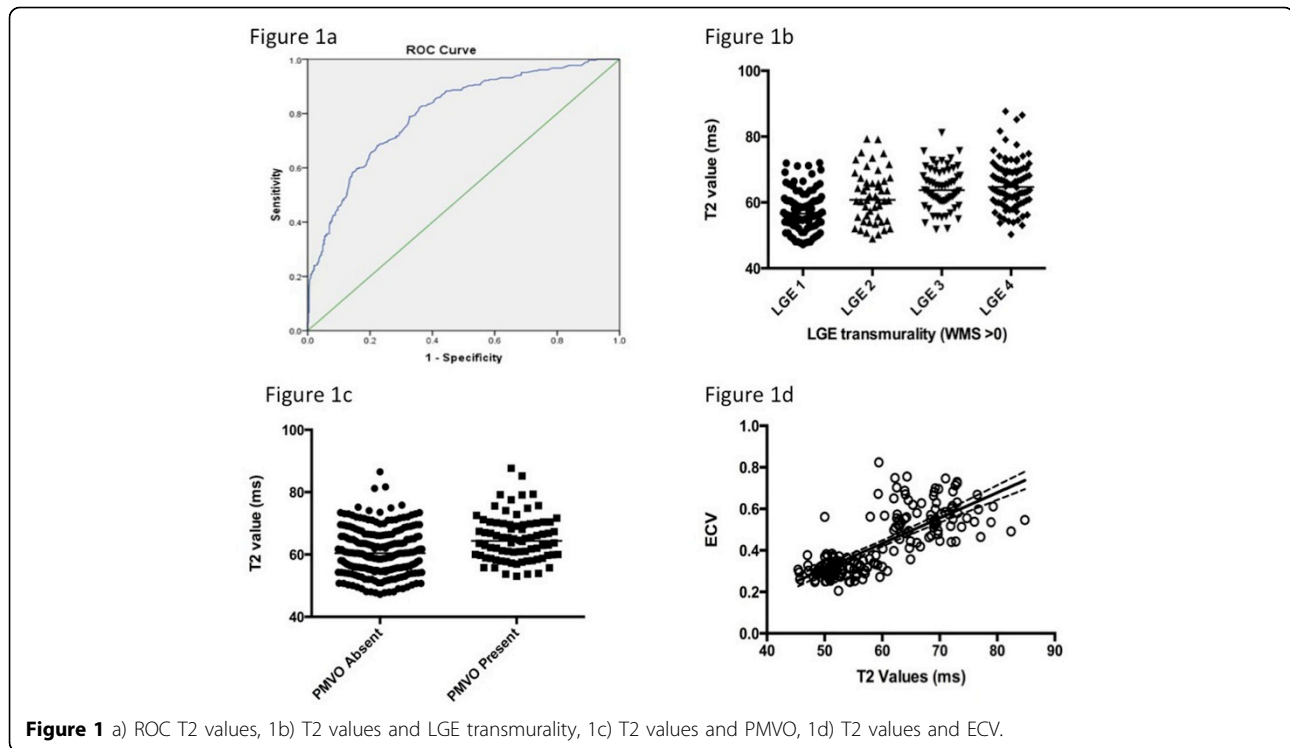
A T2 value of 55ms most optimally differentiated the segments with regional wall motion abnormalities from those segments with a normal systolic function (remote segments, T2 61 ms), with a sensitivity of 0.79 and a 1-specificity of 0.33 (AUC 0.802,  $p < 0.001$ ) (Figure 1a). T2 values differ depending on the transmural extent of the LGE per segment: LGE 1 (0-25%) median 56.6ms, IQR 53.9-60.1ms; LGE 2 (25-50%) median 60.1ms, IQR 55.0-67.0ms; LGE 3 (50-75%) median 63.7ms, IQR 60.3ms-69.4ms; LGE 4 (75-100%) median 64.7 ms, IQR 60.0-69.8ms  $p < 0.0001$  (Figure 1b). The presence of persistent microvascular obstruction also affected the T2 values: in infarcted myocardium without PMVO (median 60.4 ms, IQR 55.1-65.8ms) T2 values in infarcted myocardium with PMVO (median 64.4ms, IQR 59.7-70.0 ms),  $p < 0.0001$  (Figure 1c). There was a good association between native T1 values and T2 values ( $r = 0.785$ ,  $r^2 = 0.617$ ,  $p < 0.001$ ). There was a significant association between T2 values and ECV measured at 25 minutes following contrast administration ( $r = 0.76$ ,  $r^2 = 0.57$ ,  $p < 0.0001$ ) (Figure 1d).

## Conclusions

The optimal cut off value to determine affected myocardium following acute myocardial infarction is 55 ms. However, this must be taken in context with the

<sup>1</sup>Bristol Heart Institute, Bristol, UK

Full list of author information is available at the end of the article



knowledge that infarct characteristics can affect T2 values. There is a significant association between both native T1 and T2 values with a significant association between T2 values and ECV.

### Funding

This study was funded by the National Institute for Health Research Biomedical Research Unit in Cardiovascular Disease at the University Hospitals Bristol NHS Foundation Trust and the University of Bristol.

### Authors' details

<sup>1</sup>Bristol Heart Institute, Bristol, UK. <sup>2</sup>Heart and Lung Centre, New Cross Hospital, Wolverhampton, UK.

Published: 3 February 2015

doi:10.1186/1532-429X-17-S1-P138

Cite this article as: McAlindon *et al.*: T2 values of the acutely infarcted myocardium following primary PCI: the relationship with infarct characteristics and gadolinium extracellular volume of distribution. *Journal of Cardiovascular Magnetic Resonance* 2015 **17**(Suppl 1):P138.

Submit your next manuscript to BioMed Central and take full advantage of:

- Convenient online submission
- Thorough peer review
- No space constraints or color figure charges
- Immediate publication on acceptance
- Inclusion in PubMed, CAS, Scopus and Google Scholar
- Research which is freely available for redistribution

Submit your manuscript at  
www.biomedcentral.com/submit

BioMed Central