

**POSTER PRESENTATION**

**Open Access**

# Bioprosthetic mitral valve effective orifice area using 4D flow cardiac magnetic resonance derived time velocity integral. An in vitro comparison with Doppler Echocardiography

Dimitrios Maragiannis\*, Matthew Jackson, Stephen Igo, Karen Chin, Kyle Autry, Mohamad G Ghosn, Dipan J Shah, Stephen H Little

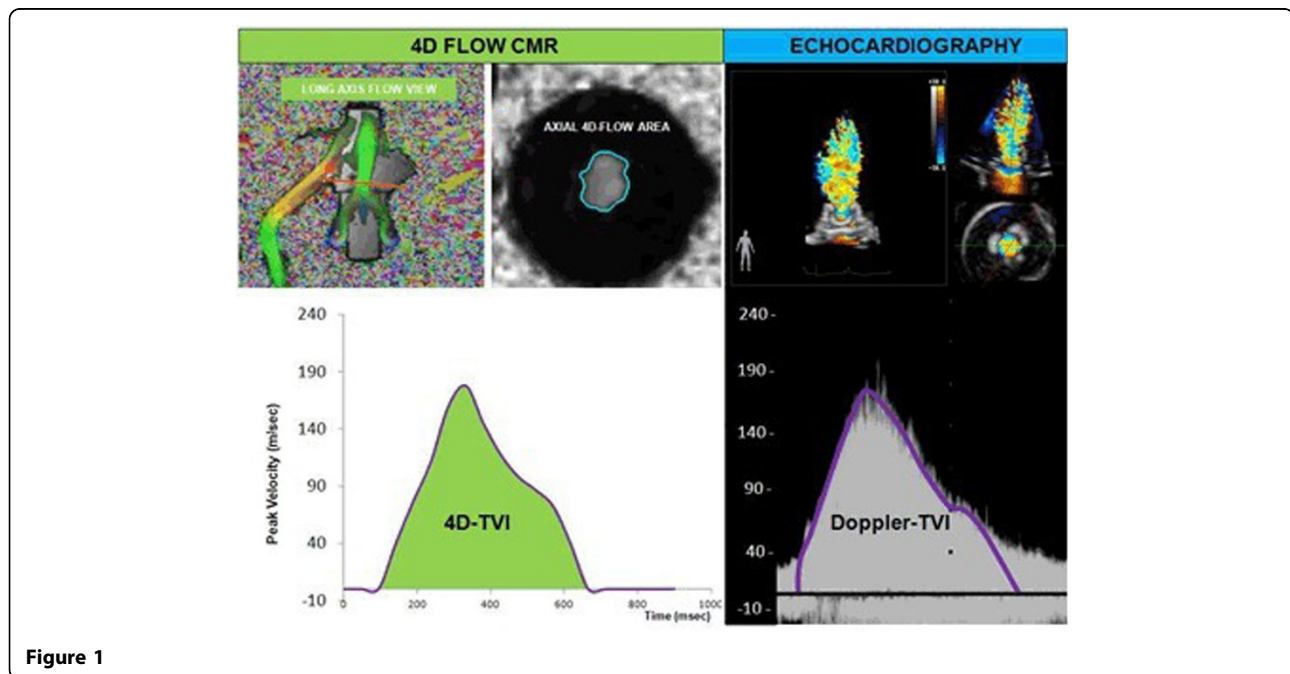
From 18th Annual SCMR Scientific Sessions  
Nice, France. 4-7 February 2015

## Background

4D Flow Cardiac Magnetic Resonance (CMR) is a novel imaging modality to assess bioprosthetic mitral valve (BMV) function. We describe a new, 4D Flow derived velocity time integral (TVI) based method to assess effective orifice area (EOA) for BMVs.

## Methods

In our MRI-compatible circulatory loop 4 stented porcine BMVs (27, 29, 31, 33mm) underwent CMR with a 1.5T Siemens scanner. The valves were evaluated at forward stroke volumes of 70, 90 and 110ml at a beat rate of 70bpm. We plotted instantaneous peak velocities and calculated TVI for each scenario. 4D CMR-EOA was



Cardiology, Houston Methodist Hospital, Houston, TX, USA

calculated by dividing the forward stroke volume measured by our high fidelity flow transducers with the calculated TVI. Doppler derived EOA was calculated identically using the Doppler derived TVI.

## Results

4D CMR-EOA was successfully calculated in a total number of 12 tests. 4D Flow CMR-EOA revealed a strong correlation when compared with Doppler derived EOA ( $r=0.985$ ,  $p<0.001$ ) and the mean difference was  $-0.1\pm 0.05\text{cm}^2$  between the two methods. Calculated CMR-TVI by our method correlated well with Doppler derived TVI ( $r=0.99$ ,  $p<0.001$  and mean difference  $3.2\pm 1.97\text{cm}$ ).

## Conclusions

Our study demonstrated the feasibility of 4D Flow CMR to evaluate bioprosthetic valve EOA with the use of velocity encoded CMR data from 4D Flow Software analysis. Our data showed high agreement with Doppler EOA calculations, demonstrating a potential for 4D Flow CMR in bioprosthetic valve evaluation.

## Funding

American Heart Association grant #11BGIA5840008.

Published: 3 February 2015

doi:10.1186/1532-429X-17-S1-P336

**Cite this article as:** Maragiannis *et al.*: Bioprosthetic mitral valve effective orifice area using 4D flow cardiac magnetic resonance derived time velocity integral. An in vitro comparison with Doppler Echocardiography. 2015 17(Suppl 1):P336.

Submit your next manuscript to BioMed Central  
and take full advantage of:

- Convenient online submission
- Thorough peer review
- No space constraints or color figure charges
- Immediate publication on acceptance
- Inclusion in PubMed, CAS, Scopus and Google Scholar
- Research which is freely available for redistribution

Submit your manuscript at  
[www.biomedcentral.com/submit](http://www.biomedcentral.com/submit)

