

WALKING POSTER PRESENTATION

Open Access

# Clinical impact of cardiovascular magnetic resonance in evaluation for possible arrhythmogenic right ventricular dysplasia/cardiomyopathy

Andrew D Choi<sup>1,2\*</sup>, Sujata M Shanbhag<sup>1</sup>, Peter Kellman<sup>1</sup>, Christine Mancini<sup>1</sup>, Marcus Y Chen<sup>1</sup>, Andrew E Arai<sup>1</sup>, Patricia W Bandettini<sup>1</sup>

From 18th Annual SCMR Scientific Sessions  
Nice, France. 4-7 February 2015

## Background

This study examined the impact of CMR on clinical management in patients with undergoing evaluation for arrhythmogenic right ventricular dysplasia/cardiomyopathy (ARVD/C).

## Methods

Patients referred for assessment of ARVD/C were evaluated. Using 2010 ARVD/C Task Force criteria, clinical history, family history, ECG and other test results were evaluated with and without CMR findings to determine definite, borderline or possible ARVD/C. CMR included

assessment of right ventricular (RV) size, function, and regional wall motion (RWM). For alternative diagnoses, tissue characterization and late gadolinium enhancement were routinely performed. Qp:Qs was performed when intracardiac shunt was suspected by the supervising physician.

## Results

311 consecutive patients (mean age  $45 \pm 14$  years, 53% male) were included. Prior to CMR, patients were classified as definite (n=1), borderline (n=1) or possible ARVD (n=18, Table). After CMR, 6 (2%) were diagnosed with

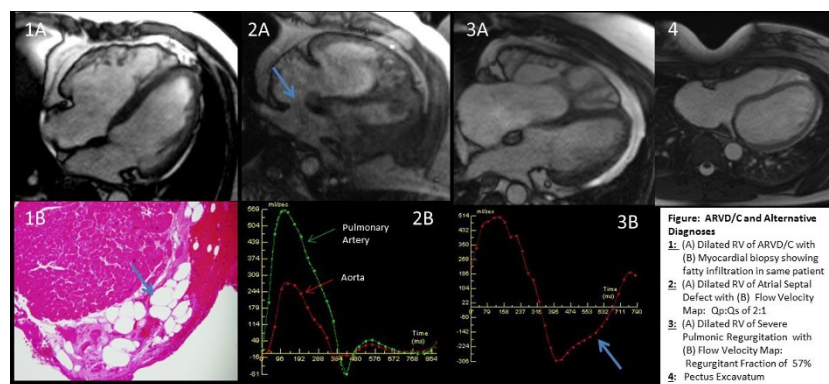


Figure 1

<sup>1</sup>Advanced Cardiovascular Imaging Laboratory, National Heart, Lung and Blood Institute, National Institutes of Health, Bethesda, MD, USA  
Full list of author information is available at the end of the article

**Table 1 Clinical Impact of CMR on Diagnosis of ARVD/C vs. Alternative Diagnoses**

n=311	2010 Guidelines without CMR Findings, n (%)	2010 Guidelines with CMR Findings, n (%)
Definite Criteria for ARVD/C	1 (0.3)	6 (2)
Borderline Criteria for ARVD/C	1 (0.3)	5 (2)
Possible Criteria for ARVD/C	18 (5.8)	9 (3)
Patients with 1 or no Minor Criteria, not meeting 2010 Guidelines Definition of "Definite", "Borderline" or "Possible"	291 (93.6)	51 (16) Alternate Diagnosis* 76 (24) RV Enlargement Alone** 164 (53) Normal RV***

\* Alternative Diagnosis Resulting in Change in Management included 6 (1.9%) Intracardiac shunts, other Cardiomyopathy or RV Overload State 36 (11.5%), or Other Diagnosis 9 (2.8%)

\*\*RV Enlargement Alone with normal RV Function and Regional Wall Motion

\*\*\* Normal RV Function, Size and Regional Wall Motion by CMR

definite ARVD/C and underwent defibrillator implantation, 5(2%) were classified as borderline ARVD/C, and 9 (3%) remained possible ARVD/C. 51(16%) had alternative diagnoses (Figure/Table), resulting in a management change: 6(1.9%) patients had intracardiac shunt, 36(11.5%) had another cardiomyopathy or RV overload state, and 9(2.8%) had other diagnoses. 76(24%) had RV enlargement alone with normal RV function and absent RWM by CMR while 164(53%) without other major criteria had normal RV function, size, and RWM.

## Conclusions

CMR impacted clinical management by contributing to the diagnosis of definite or borderline ARVD/C in 4% of patients and by excluding the presence of significant RV dysfunction, enlargement, and RWM in over half of patients. CMR identified important alternative diagnoses in 16%.

## Funding

No conflicts of interest to disclose.

## Authors' details

<sup>1</sup>Advanced Cardiovascular Imaging Laboratory, National Heart, Lung and Blood Institute, National Institutes of Health, Bethesda, MD, USA. <sup>2</sup>Division of Cardiology, Medstar Washington Hospital Center, Washington, DC, USA.

Published: 3 February 2015

doi:10.1186/1532-429X-17-S1-Q53

**Cite this article as:** Choi et al.: Clinical impact of cardiovascular magnetic resonance in evaluation for possible arrhythmogenic right ventricular dysplasia/cardiomyopathy. *Journal of Cardiovascular Magnetic Resonance* 2015 **17**(Suppl 1):Q53.

**Submit your next manuscript to BioMed Central and take full advantage of:**

- Convenient online submission
- Thorough peer review
- No space constraints or color figure charges
- Immediate publication on acceptance
- Inclusion in PubMed, CAS, Scopus and Google Scholar
- Research which is freely available for redistribution

Submit your manuscript at  
[www.biomedcentral.com/submit](http://www.biomedcentral.com/submit)

