

WORKSHOP PRESENTATION

Open Access

Characterization of T_1 bias from lipids in MOLLI and SASHA pulse sequences

Sarah B Thiesson*, Richard B Thompson, Kelvin Chow

From 18th Annual SCMR Scientific Sessions
Nice, France. 4-7 February 2015

Background

Increased myocardial T_1 values are associated with fibrosis and edema, while decreased values in Fabry disease have been attributed to the short T_1 of infiltrative lipids [1,2]. The relationship between lipid concentration (LC) and best-fit T_1 values is unknown. This study aims to determine the dependence of MOLLI and SASHA T_1 values on LC.

MOLLI and SASHA [3] T_1 mapping sequences are based on the bSSFP acquisition. bSSFP signal yield as a function of off-resonance frequency is well characterized [4,5], with phase inversion in sequential “bSSFP bands” and a profile shift as a function of resonance frequency, resulting in constructive/destructive interference between water and fat [6,7]. We hypothesized that lipids may decrease or increase T_1 values as a function of off-resonance frequency.

Methods

Bloch equation simulations of MOLLI and SASHA for 0:2:10% LC incorporated exact pulse sequence parameters including slice profiles and an accurate fat spectral line shape.

MOLLI and SASHA acquisitions (identical to simulations) were repeated 50 times, spanning 450 Hz of off-resonance (1.25 bSSFP bands) in both phantoms (LC of 0.5-10%), and in-vivo in three calf muscle regions with different LC [8]. *Acquisition Parameters:* 1.5T Siemens

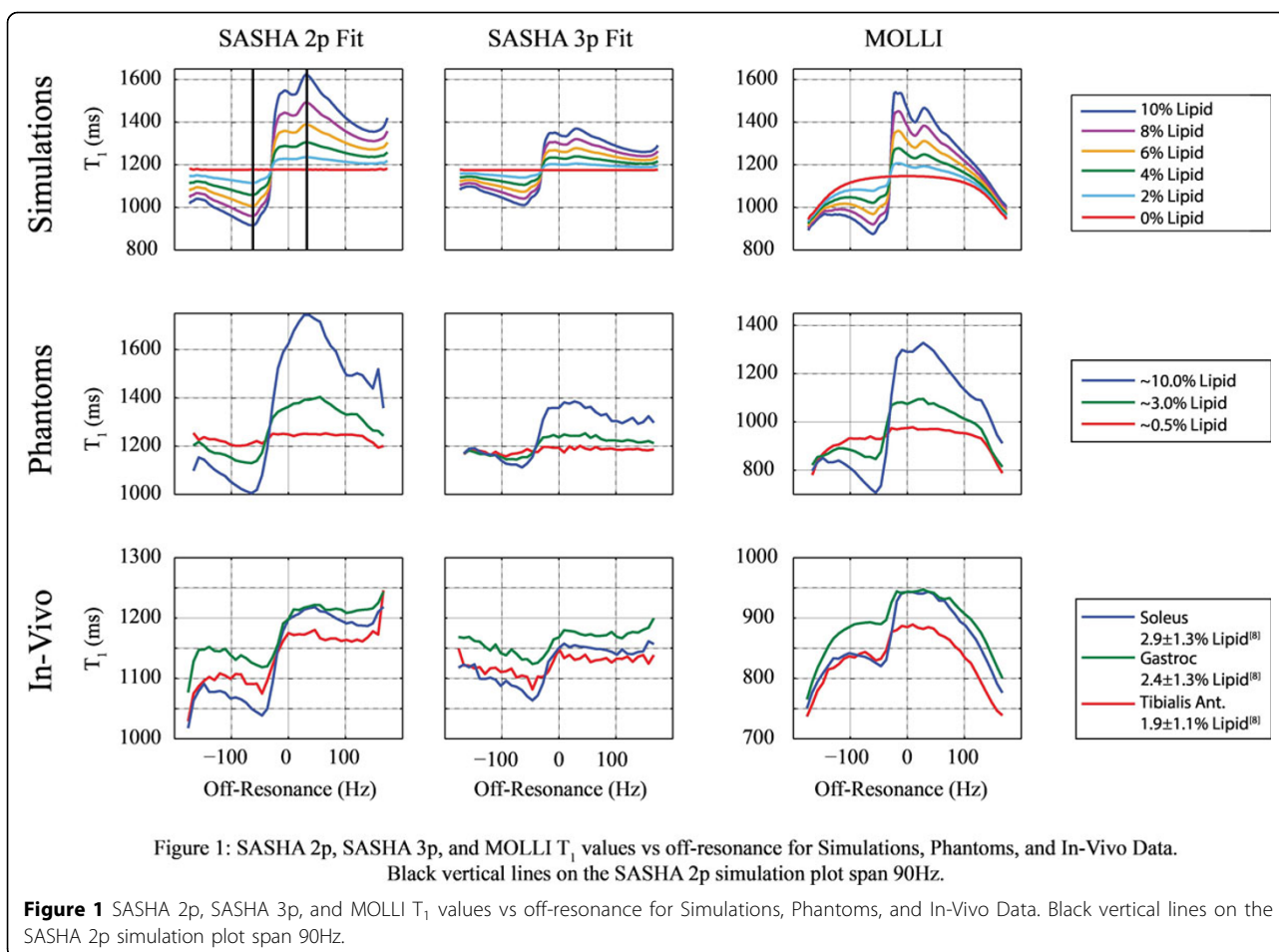
Sonata, single-shot bSSFP, 1.35/2.7ms TE/TR, 192x72 matrix, 360x270 mm FOV, 70° SASHA flip, 35° MOLLI flip [9]. T_1 values were calculated using standard Look-Locker correction (MOLLI) or 2 and 3 parameter exponential models (SASHA) at each frequency increment across the bSSFP band.

Results

MOLLI and SASHA T_1 values have an asymmetric relationship with off-resonance, with larger positive and negative biases with larger LC (Fig. 1). Over a small ± 45 Hz range, a 1% LC gives rise to a T_1 bias ranging from -39 to +26ms (MOLLI), -19 to +16ms (SASHA 3p) and -44 to +25ms (SASHA 2p). The location of the cross-over point is a function of field-strength and TR; these findings are specific to 1.5T and TR=2.7ms. MOLLI T_1 values have an additional intrinsic dependence on off-resonance resulting in an underlying domed shape [10].

Conclusions

Relatively low LC results in clinically relevant negative or positive shifts in tissue T_1 over a narrow range of off-resonance frequencies with MOLLI and SASHA. Thus, increased or decreased native T_1 values can potentially be ascribed to lipids, which can confound underlying increased water T_1 values ascribed to fibrosis or edema and complicate the use of T_1 mapping for indirect identification of lipids via reduced T_1 values [1,2].



Published: 3 February 2015

References

1. Sado DM, et al: *Circ Cardiovasc Imag* 2013, **6**:392.
2. Thompson RB, et al: *Circ Cardiovasc Imag* 2013, **6**:637.
3. Chow K, et al: *Magn Reson Med* 2014, **71**:2082.
4. Carr H: *Phys Rev* 1958, **112**:1693.
5. Miller KL: *Magn Reson Med* 2010, **63**:385.
6. Aquaro GD, et al: *J Magn Reson Imag* 2014, **40**:126.
7. Bley TA, et al: *J Magn Reson Imag* 2010, **31**:4.
8. Machann J, et al: *Magn Reson Imag* 2003, **17**:350.
9. Chow K, et al: *JCMR* 2014, **16**:M9.
10. Kellman P, et al: *J Cardiovasc Magn Reson* 2013, **22**:15.

doi:10.1186/1532-429X-17-S1-W10

Cite this article as: Thiesson et al.: Characterization of T_1 bias from lipids in MOLLI and SASHA pulse sequences. *Journal of Cardiovascular Magnetic Resonance* 2015 **17**(Suppl 1):W10.

Submit your next manuscript to BioMed Central and take full advantage of:

- Convenient online submission
- Thorough peer review
- No space constraints or color figure charges
- Immediate publication on acceptance
- Inclusion in PubMed, CAS, Scopus and Google Scholar
- Research which is freely available for redistribution

Submit your manuscript at
www.biomedcentral.com/submit

