

RESEARCH

Open Access



# Left atrial structure and functional quantitation using cardiovascular magnetic resonance and multimodality tissue tracking: validation and reproducibility assessment

Mytra Zareian<sup>1</sup>, Luisa Ciuffo<sup>1</sup>, Mohammadali Habibi<sup>1</sup>, Anders Opdahl<sup>2</sup>, Elzbieta H. Chamera<sup>1</sup>, Colin O. Wu<sup>3</sup>, David A. Bluemke<sup>3</sup>, João A. C. Lima<sup>1</sup> and Bharath Ambale Venkatesh<sup>1\*</sup>

## Abstract

**Background:** Left atrium (LA) strain, volume and function are important markers of cardiovascular disease and myocardial impairment. We aimed to assess the accuracy of LA biplane volume and function measured by Multimodality Tissue Tracking (MTT). Also we assessed the inter-study reproducibility for cardiovascular magnetic resonance (CMR) derived LA volume and function parameters.

**Methods:** Thirty subjects (mean age:  $71.3 \pm 8.7$ , 87 % male) including twenty subjects with cardiovascular events and ten healthy subjects, with CMR were evaluated in the Multi-Ethnic Study of Atherosclerosis (MESA). LA volumes were computed by the modified biplane method from 2- and 4-chamber projections and the Simpson's method from short-axis slices using both methods - manual and semi-automated delineation using MTT. LA total, active and passive ejection fractions were calculated. Pearson's correlation and Bland-Altman analysis were used to compare the measurements. In a second sample of 25 subjects (age:  $65.7 \pm 7.1$ , 72 % males) inter study, intra and inter reader reliability analysis was performed. The intra-class correlation coefficient (ICC) was evaluated.

**Results:** Left atrial MTT structural and functional parameters were not different from manual delineation, yet image analysis was only half as time consuming on average with MTT. Maximal volume MTT was not different between the Simpson's and Biplane methods, functional parameters, however were different. MTT allowed us to measure multiple LA parameters with good-excellent (ICC; 0.88– 0.98,  $p < 0.001$ ) intra-and inter reader reproducibility and fair-good (ICC; 0.44–0.82,  $p < 0.05$ –0.001) inter study reproducibility.

**Conclusions:** MTT derived LA biplane volume and function is accurate and reproducible and is suited for use in longitudinal studies.

**Keywords:** Left atrial function, Tissue tracking, Left atrial strain, Reproducibility, Cardiovascular magnetic resonance

\* Correspondence: bambale1@jhmi.edu

<sup>1</sup>MR 110, Radiology, Johns Hopkins University, Baltimore, MD 21287, USA

Full list of author information is available at the end of the article

## Background

Left atrium (LA) enlargement is associated with adverse cardiovascular outcomes [1, 2]. Studies have reported the relationship between increased LA size and the incidence of heart failure (HF), atrial fibrillation (AF), stroke and risk of overall mortality after myocardial infarction (MI) [1–4]. Furthermore, LA function is believed to be a dynamic marker of both the severity and chronicity of diastolic LV dysfunction [3, 5].

The American Society of Echocardiography recommends the quantification of LA by 2-D echocardiography using either the biplane area length method or the method of discs [1, 6]. However, 2D and 3D echo usually underestimate LA size and volumes as compared to cardiovascular magnetic resonance (CMR) and MSCT [1, 7]. The higher spatial resolution and non-invasiveness afforded by CMR has made it a preferred method for the assessment of cardiac anatomy, dimensions, function and mass [8]. The standard short-axis method of measuring left atrial volume and ejection fraction is very time-consuming both in terms of acquisition of additional slices as well as additional analysis time [8, 7]. While global cardiac function is more often reported and used as clinical parameter of cardiac status, some studies have demonstrated that regional myocardial strain may be more sensitive in detecting early myocardial dysfunction [9].

The aims of this study are (i) to validate feature tracking using the Multimodality Tissue Tracking (MTT) software for CMR for quantifying LA volumes and functional (global and regional) parameters; (ii) to compare the biplane method with the Simpson's method; (iii) to establish inter-study reproducibility of strain and function measured from the bi-plane method.

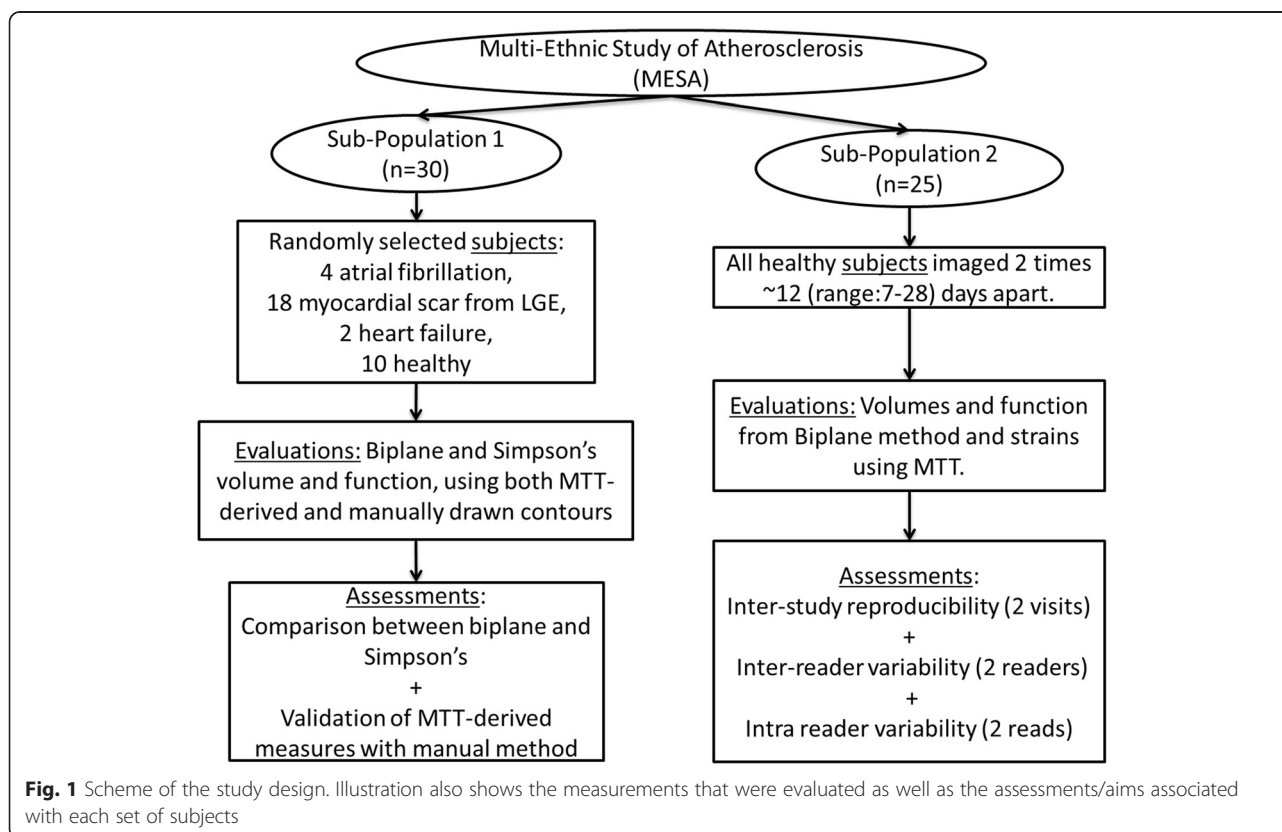
## Methods

### Study population

This ancillary study was designed in the Multi-Ethnic Study of Atherosclerosis (MESA). MESA, which was initiated in 2000, is a prospective observational multi-center cohort study [10]. Participant's ages ranged 45–84 years and all were asymptomatic of clinical CVD at enrollment. The institutional review boards of all centers approved this study and informed consent was obtained from every participant. More detailed information about the MESA study goals and methods can be found elsewhere [10].

For this study, 2 sets of subjects were chosen. Please see Fig. 1 for a detailed illustration of the 2 sets of subjects and specific aims associated with each population.

- i. Population 1 consisted of thirty selected subjects (mean age:  $71.3 \pm 8.7$ , 87 % male) including twenty subjects with prior cardiovascular events (4 atrial



fibrillation, 18 myocardial scar from late gadolinium enhancement, 2 heart failure) and ten healthy subjects, with CMR imaging were evaluated from the MESA 10-year follow-up exam (2010 to 2012). The twenty subjects with prior cardiovascular events were chosen randomly from a sample of 233 participants with atrial fibrillation, myocardial scar or heart failure – all factors that have been associated with modified structure and reduced LA function; while the 10 healthy subjects were chosen from 2634 participants with no prior cardiovascular disease. The study was so designed to compare performance across the complete range of expected LA structure and function. In this first sample, a comparison between biplane and Simpson's method; and the validation of MTT against the manual method (using QMass Medis, Leiden, Netherlands) was performed.

- ii. The second sample, population 2, was composed of 25 subjects chosen randomly who agreed to be part of the reproducibility study performed at Johns Hopkins University. These subjects were enrolled between 2008 and 2010 and had

a baseline and follow-up exam  $12 \pm 7$  days (range, 7–28 days) days apart. On this sample we established inter study, intra and inter reader reliability.

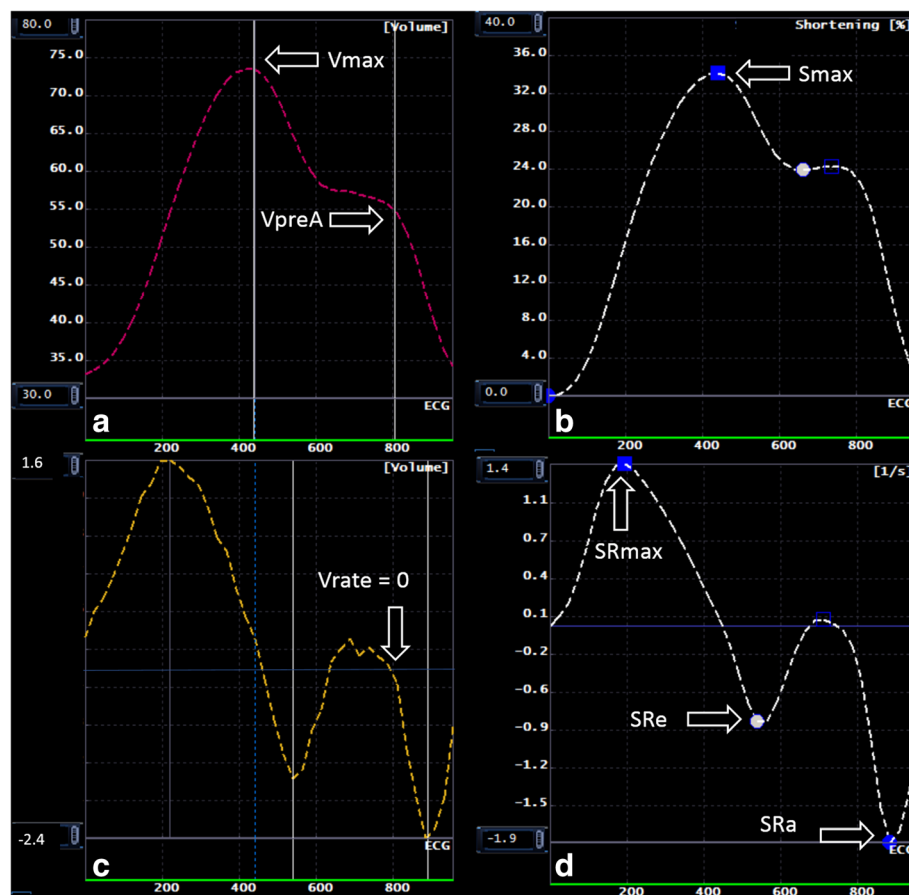
#### CMR protocol

All participants underwent CMR using a 1.5 T scanner (Avanto; Siemens Medical Systems, Erlangen, Germany) with a gradient strength of 45 mT/m, slew rate of  $200 \text{ Tm}^{-1}/\text{s}$ . The cine images included coverage of the entire LV and LA using short-axis slices, one 2-chamber slice and one 4-chamber view scanned by steady-state free precession sequences (SSFP) with the following parameters: Slice thickness: 8 mm; Gap: 2 mm; Temporal resolution: 35 ms (30 frames); Matrix:  $256 \times 256$  and Field of view:  $360 \times 360$  mm.

#### CMR analysis

##### Multimodality tissue tracking

Multimodality Tissue tracking software (MTT; version 6.0, Toshiba, Japan) is an automated frame-to-frame template matching software [11, 12]. Initially, an experienced



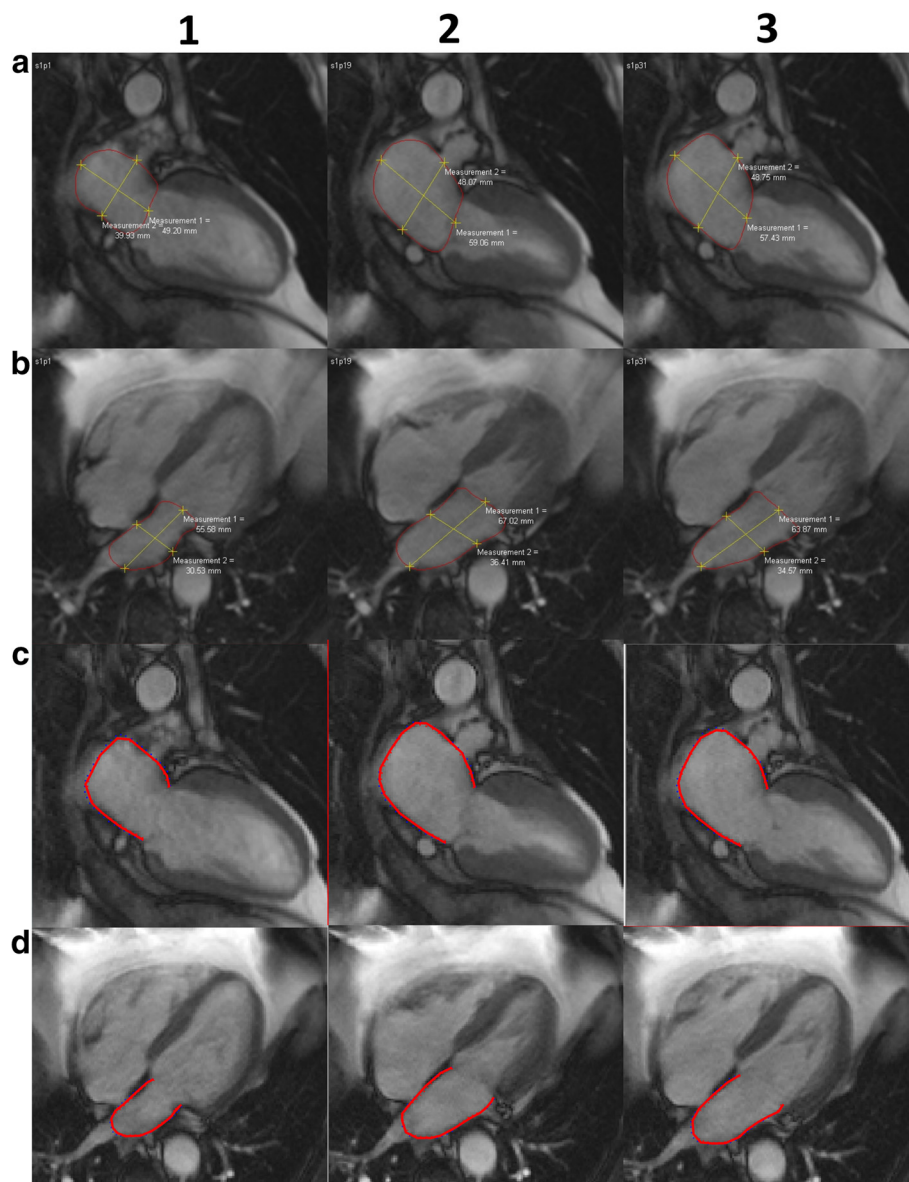
**Fig. 2** Multimodality Tissue Tracking, volume analysis (Panel a), volume rate analysis (Panel b), strain analysis (Panel c) and strain rate analysis (panel d). Green line: End-systole. White line: Point where volume-rate curve: 0; Corresponding VpreA in the volume curve

operator defines the LA endocardial and epicardial borders at the reference frame - ventricular end-systolic frame identified just before mitral valve opening, when the LA is at its biggest dimension (Fig. 2). The confluence of the pulmonary veins and LA appendage are not included in the segmentation.

The software then propagated these borders across the cardiac cycle automatically using a template matching algorithm. The software recorded a characteristic pixel pattern of each  $10 \times 10$  mm square area in the

reference frame; an area with identical pixel pattern was recognized in the next frame that maximized the similarity evaluated by cross-correlation between the square areas. This procedure was repeated for all pixels in each image and for each frame to track the borders throughout the whole cardiac cycle [13]. Finally, the operator verified the quality of the tracking generated by the software.

MTT was used in untagged long-axis 2-chamber and 4-chamber projections to obtain:



**Fig. 3** Biplane method. Manual delineation requires manual drawing of the endocardial contours in (1) end-diastolic, (2) end-systolic and (3) pre-atrial kick phase, separately for 2 (a) and 4 (b) chamber projections. Corresponding contours using Multimodality Tissue Tracking software are shown at end-diastole (c) and endsystole (d). The contours were drawn at left-ventricular end-systole (the point of largest LA enlargement) and were propagated by the software throughout the cardiac cycle

- Maximum LA volume ( $V_{\max}$ ): LA volume at end-systole, immediately before mitral valve opening.
- Minimum LA volume ( $V_{\min}$ ): LA volume at end-diastole, immediately before mitral valve closure.
- Pre-atrial contraction volume ( $V_{\text{preA}}$ ): LA volume at onset of the P-wave on ECG.
- Strain rate at maximum ( $S_{\max}$ ): Peak global longitudinal strain. Indirect measurement of atrial relaxation during LV systole.
- LA strain rate at maximum ( $SR_{\max}$ ): Time derivate peak strain rate during ventricular systole.
- Early LA diastolic peak (SR<sub>E</sub>): Time derivate first (ventricular) diastolic LA strain peak.
- Atria contraction peak (SR<sub>A</sub>): Time derivate maximum strain measured at atrial contraction. Second (ventricular) diastolic LA strain peak.

All the above parameters were obtained from strain, strain rate and volume curves from MTT (Fig. 3). LA performs three different functions during the cardiac cycle: 1) acts as a reservoir during LV systole; 2) acts as a conduit in early LV diastole; 3) acts as an active pump during late LV diastole [1]. Taking this information in consideration, we performed the measurement of pre-atrial contraction volume at the point where the rate of change of atrial volume was closest to zero, at this point the atria acts as a conduit, thus, only minor changes in volumes can be visualized in the LA, representing the transition between atrial conduit phase and atrial contraction phase (Fig. 3) [14]. Left atrial ejection fraction (LAEF %) was calculated as:  $(V_{\max}-V_{\min})/V_{\max} \times 100$ ; Left atrial passive ejection fraction (LAPEF %):  $(V_{\max}-V_{\text{preA}})/V_{\max} \times 100$  and Left atrial active ejection fraction (LAAEF %):  $(V_{\text{preA}}-V_{\min})/V_{\text{preA}} \times 100$ .

### The biplane area-length method

The formula on which the biplane method is based on is as follows: LA volume =  $(0.848 * \text{area}_{4\text{chamber}} * \text{area}_{2\text{chamber}}) / (\text{length}_{2\text{chamber}} + \text{length}_{4\text{chamber}}) / 2$  [6] (Fig. 2). The LA appendage and the confluence of the pulmonary veins at its ostium are excluded. The Simpson's method essentially is the summation of the cross-sectional areas of each slice accounting for slice thickness and the interval between slices from short axis views. Volumes were calculated at the end-diastolic, end-systolic and pre-atrial phases, all the phases were determined based on visual inspection of the chamber through the cycle in the manual delineation (requires drawing contours at each time) method using QMass (Medis, Leiden, Netherlands).

### MTT reproducibility

Intra reader MTT reproducibility was established by one reader who performed analysis of the studies twice using MTT software to generate LA functional and structural parameters, the interval between the two analyses were at least 7 days. Inter reader reproducibility was assessed by two readers who analyzed the same cases using MTT software to generate LA data. The second reader was blinded to the results of the first reader.

### Statistical analysis

Data are presented as mean  $\pm$  standard deviation (SD) for continuous variables and as percentages for categorical variables. A paired student's two-tailed *t* test was used to determine significant differences between the two sets of methods and software's. Linear regression analysis and Pearson's correlation were also used to examine the relationship between the two methods. Pearson's correlation coefficient was scored as follows: poor correlation, 0; slight, 0.01–0.20; fair, 0.21–0.40; moderate, 0.41–0.60; good, 0.61–0.80, and excellent, 0.81–1.00 correlation.

For intra-and inter-observer reproducibility and inter study reproducibility a Bland-Altman analysis and Passing-Bablok regression were performed [15, 16]. Moreover the intra-class correlation coefficient (ICC) with a two way random model (ICC, <0.40, poor; ICC >0.40–0.75, fair to good; and ICC >0.75, excellent agreement) was evaluated. For inter-study reproducibility, Absolute measurement error was estimated by the standard error of the measurement (SEM) and smallest detectable change (SDC) [17]. We performed the calculations using the

**Table 1** Participant characteristics

Parameter	Sample 1 (n = 30)	Sample 2 (n = 22)	<i>p</i>
Age (years)	71.3 $\pm$ 8.7	65.7 $\pm$ 7.1	0.01
Gender, male (%)	86.7	71.4	
Ethnicity			
African-American (%)	46.7	33.3	
Caucasian (%)	53.3	66.6	
BMI (kg/m <sup>2</sup> )	30.1 $\pm$ 4.8	29.8 $\pm$ 5.4	0.60
SBP (mmHg)	123.8 $\pm$ 15.3	123.3 $\pm$ 18.5	0.92
DBP (mmHg)	65.3 $\pm$ 11.2	72.7 $\pm$ 10.3	0.33
Heart rate (bpm)	65.8 $\pm$ 12.6	60.4 $\pm$ 11.1	0.13
Antihypertensive medication (%)	67		
DM/IFG (%)	50	50	
Total cholesterol	167.5 $\pm$ 32.4	197.1 $\pm$ 41.5	<0.05

Results are reported as mean  $\pm$  standard deviation. Patient characteristics for participants in: sample 1- the validation study, and sample 2- the reproducibility study

Abbreviations: BMI Body mass index, SBP Systolic blood pressure, DBP Diastolic blood pressure, DM Diabetes mellitus, IFG Impaired fasting glucose

**Table 2** Comparison between the manual vs. MTT derived biplane volume and global function measures (n = 29)

LA parameter	MTT	Manual	P	r	P
Vmax (ml)	86.5 ± 33	84.4 ± 34	0.08	0.98	<0.001
LAEF (%)	0.45 ± 0.13	0.44 ± 0.12	0.21	0.88	<0.001
LAPEF (%)	0.17 ± 0.05	0.16 ± 0.08	0.67	0.57	<0.001
LAAEF (%)	0.37 ± 0.1	0.36 ± 0.09	0.21	0.83	<0.001

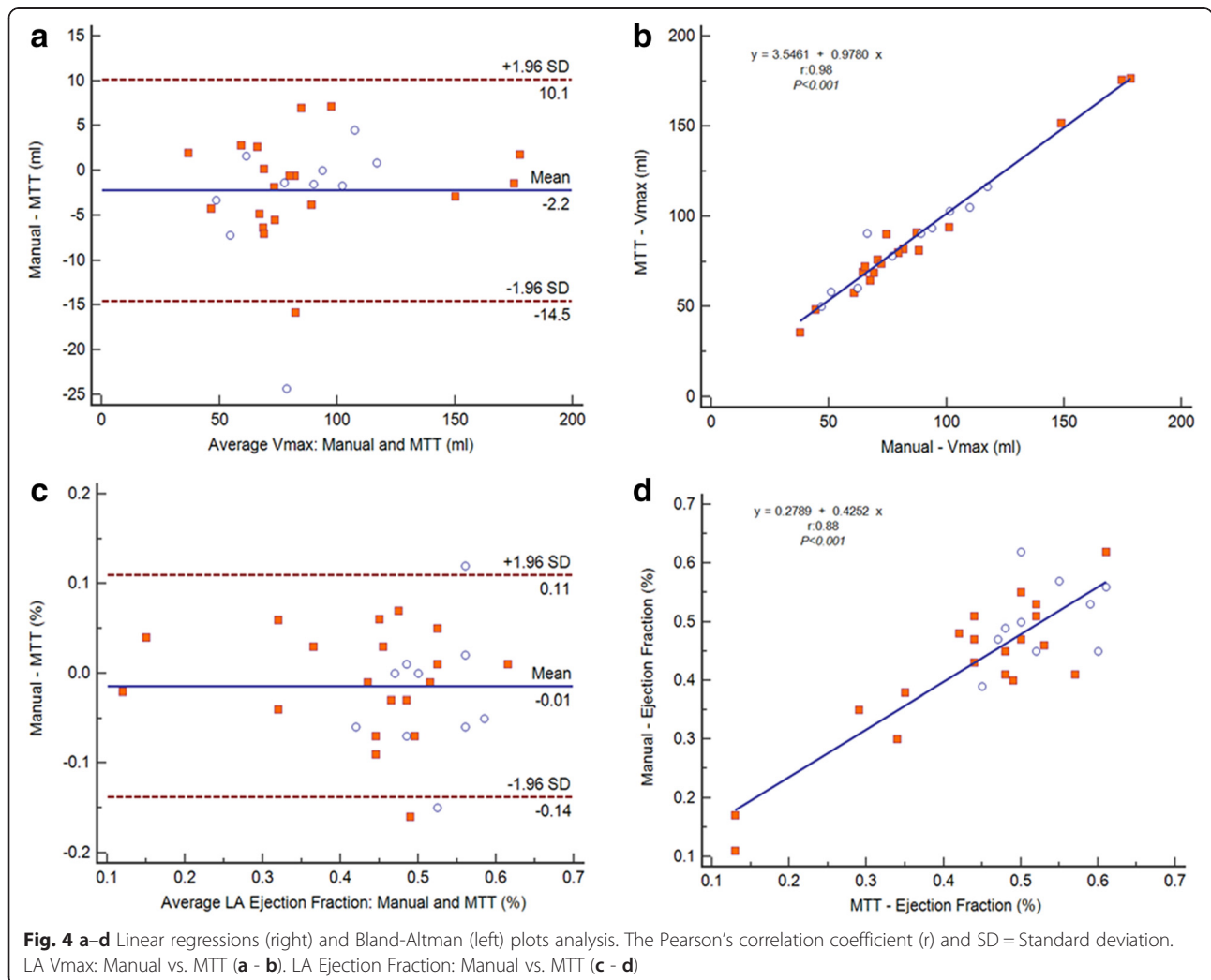
Results are reported as mean ± standard deviation  
 Abbreviations: Vmax left atrial maximal volume, LAEF left atrial total ejection fraction, LAPEF left atrial passive ejection fraction, LAAEF left atrial active ejection fraction, r Pearson coefficient

following formulas:  $SEM = SD \times \sqrt{1-ICC}$  and  $SDC = 1.96 \times SEM \times \sqrt{2}$ . SDC was established taking in consideration 95 % confidence interval (1.96). Statistical analysis was done using SPSS version 20 (SPSS Inc., Chicago). MedCalc (MedCalc Software version 13.2.2.0, Mariakerke, Belgium) was used to perform Bland-Altman plots and regressions graphics.

**Results**

The participant characteristics for both samples are show in Table 1. The first sample (population 1) was composed by individuals with the following characteristics; mean age  $71.3 \pm 8.7$  years and 86.7 % were men. A larger proportion was Caucasian (53.3 %) and African-American (46.7 %) than in the overall population of participants at the MESA Exam 5. Among these subjects 23 % had diabetes mellitus, 33 % had a diagnosis of hypertension. One case was excluded from the first sample because of MRI technical limitations (short axis image did not cover the entire LA).

The second sample (population 2) was composed by individuals with the following characteristics; mean age  $66.4 \pm 7.15$  years and 71.4 % were men. Of these, 28 % had diabetes mellitus, 56 % had a diagnosis of hypertension. Three subjects were excluded due to: poor orientation of the four Chamber View and significant image artifacts.



## Population 1

### MTT validation

Table 2 shows comparison between the Manual vs. MTT derived Biplane LA Volume and Global Function measures. No significant differences between the manual and MTT-derived bi-plane measures were found for any of the parameters analyzed. Moreover, they had good-to-excellent correlation ( $r: 0.83-0.98, p < 0.001$ ) and agreement as shown in the Bland-Altman plots for all variables (Figs. 4a-d); except for LAPEF which demonstrated the lowest correlation ( $r: 0.53, p < 0.001$ ) and less agreement (Mean Difference  $\pm$  SD of difference). Image analysis was less time consuming on average with MTT (Simpson's: MTT vs. manual: 3:10 min vs. 7:23 min; Biplane, MTT vs. manual: 1:30 min vs. 8:28 min).

### Comparison of Simpson's vs. biplane methods assessed by MTT

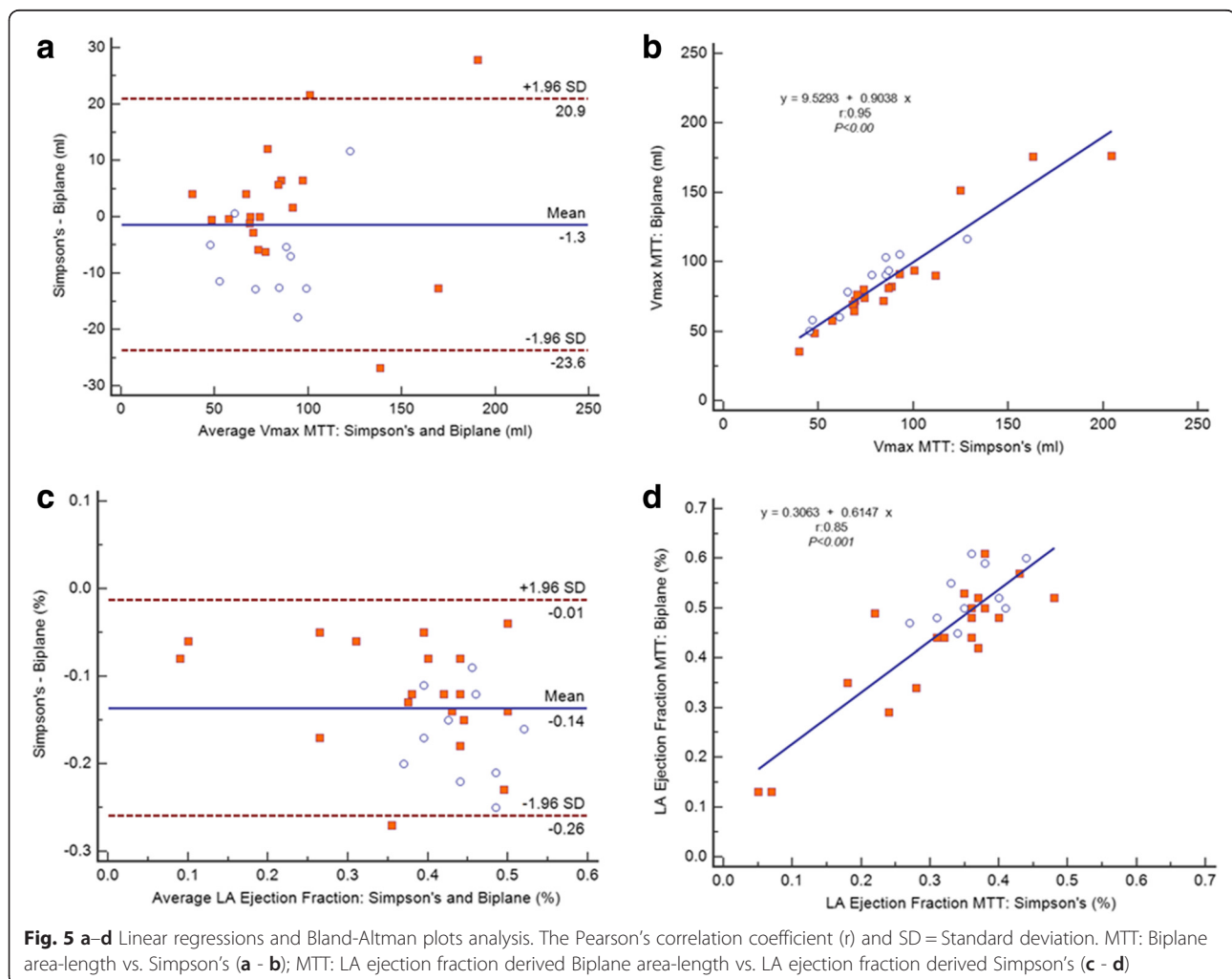
LA maximum volumes obtained from MTT method were not significantly different between Simpson's and biplane methods:  $85.2 \pm 35.2$  vs.  $86.5 \pm 33.6$  (Fig. 5). However, there

was a statistically significant difference between all the functional global parameters: LAEF (Biplane:  $0.46 \pm 0.2$ , Simpson:  $0.33 \pm 0.10, p < 0.001$ ), LAPEF (Biplane:  $0.18 \pm 0.05$ , Simpson:  $0.11 \pm 0.04, p < 0.001$ ) and LAAEF (Biplane:  $0.37 \pm 0.07$ , Simpson:  $0.27 \pm 0.06, p < 0.001$ ). Functional measurements established by Simpson's method were systematically lower. The same trend was found in the analysis of biplane vs. Simpson's performed by manual method (Table 3).

## Population 2

### MTT inter, intra-reader and test-retest reproducibility

Inter observer and intra observer variability of LA analysis for the MTT method was assessed in 22 subjects (Table 4, Figs. 6 and 7). All parameters showed excellent intra reader reproducibility (ICC;  $0.88-0.98, p < 0.001$ ) without significant systematic bias. Except for Sra % (ICC;  $0.54, p < 0.05$ ) the other parameters showed excellent inter reader reproducibility (ICC;  $0.89-0.96, p < 0.001$ ). Retest reproducibility (Table 5, Fig. 8) showed fair



**Table 3** Comparison between the Simpson's method vs. Biplane method using MTT and Manual ( $n = 29$ )

Manual	Biplane	Simpson's	<i>P</i>	<i>r</i>	<i>P</i>
Vmax (ml)	84.3 ± 34.6	88.1 ± 35.2	0.08	0.95	<0.001
LAEF	0.44 ± 0.1	0.34 ± 0.1	<0.001	0.88	<0.001
LAPEF	0.21 ± 0.22	0.17 ± 0.23	<0.001	0.70	<0.001
LAAEF	0.36 ± 0.08	0.28 ± 0.07	<0.001	0.70	<0.001
MTT	Biplane	Simpson's	<i>P</i>	<i>r</i>	<i>P</i>
Vmax (ml)	86.5 ± 33.6	85.2 ± 35.2	0.53	0.95	<0.001
LAEF	0.46 ± 0.1	0.33 ± 0.10	<0.001	0.85	<0.001
LAPEF	0.22 ± 0.21	0.16 ± 0.23	<0.001	0.57	0.002
LAAEF	0.38 ± 0.09	0.27 ± 0.06	<0.001	0.61	<0.001

Results are reported as mean ± standard deviation

Abbreviations: Vmax left atrial maximal volume, LAEF left atrial total ejection fraction, LAPEF left atrial passive ejection fraction, LAAEF left atrial active ejection fraction, *r* Pearson coefficient

to good agreement (ICC; 0.44–0.82,  $p < 0.05$ –0.001) between all parameters.

## Discussion

The main findings of this study can be summarized as follows: (i) Long axis MTT structural and functional parameters were similar to those from manual delineation; (ii) Maximal volume assessed by MTT was not different between the Simpson's and Biplane method, functional parameters, however were different. (iii) MTT allowed us to measure multiple LA parameters with good-excellent intra- and inter reader reproducibility and fair-good inter study reproducibility.

LA enlargement is a predictor of poor clinical outcome, especially in patients affected by AF [1–3]. In the clinical setting, volume determinations for LA size are preferred over linear dimensions because of the more accurate assessment of the asymmetric remodeling of the LA chamber [1, 18]. The gold standard method for

the assessment of LA volume is the short axis model which is well known but time consuming, thus less used [8, 19, 7]. Our study showed that the more practical and faster assessment of LA maximum volume using biplane area length method had good agreement and it did not identify significantly different maximum volumes when compared with the short-axis based Simpson's method, these results were similarly to data already presented in other studies in MRI and CT [19–22]. These studies did however not assess LA active and passive function. The differences in function indicate that the changes in LA volume are perhaps, less accurately captured using the bi-plane methods than the Simpson's method. The error on estimation of LAEF, in both manual and MTT methods, may be consequence of the biplane underestimation of LA minimal volume; thus, overestimation of LAEF, probably due to a more irregular shape of the LA at end of LA systole (Table 3). This bias was seen to be consistent as seen in the Bland-Altman plot for the range of LAEF seen in our study. It is known that the biplane method may be erroneous when long-axis slices acquired are not aligned correctly or when the normal LA shape is distorted under different clinical conditions [23, 7]. Despite these technical issues, LAEF estimation using biplane formula is significantly different in those with infarction [13] and in heart failure [11]. Moreover, other studies have already established the clinical utility of bi-plane LA function in a number of conditions [19, 20, 24, 13, 6]. The validation of MTT against standard manual method did not show any significant differences among structural and functional parameters and showed good-to-excellent correlation. MTT image analysis was less time consuming on average which is crucial for application in a clinical scenario.

Most studies assessing strain using tissue tracking CMR have been restricted to the LV [25–27]. Our results

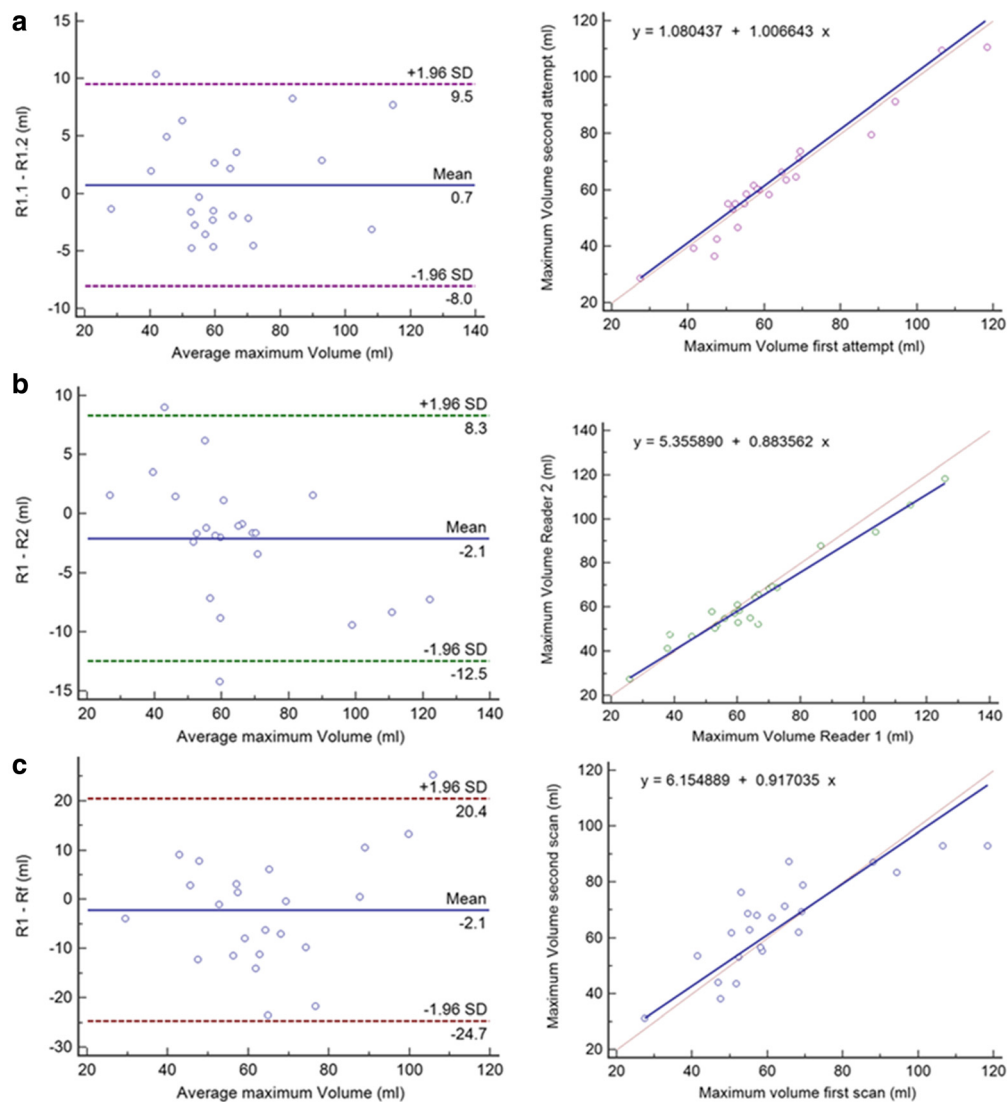
**Table 4** MTT Inter- and intra-observer reproducibility for left atrium measurement ( $n = 22$ )

LA parameter	Inter-reader			Intra-reader				
	Difference (mean ± SD)	<i>P</i>	ICC	Difference (mean ± SD)	<i>P</i>	ICC	<i>p</i>	
Vmax (ml)	−2.25 ± 5.29	0.07	0.97	0.74 ± 4.48	0.44	0.98	<0.001	
LAEF (%)	1.40 ± 3.80	0.91	0.92	−0.11 ± 4.17	0.90	0.91	<0.001	
LAPEF (%)	0.43 ± 4.16	0.62	0.82	0.68 ± 3.28	0.33	0.88	<0.001	
LAAEF (%)	1.54 ± 5.05	0.16	0.87	−0.64 ± 5.08	0.55	0.87	<0.001	
Smax (%)	−0.16 ± 2.37	0.75	0.96	−0.34 ± 2.96	0.59	0.92	<0.001	
SRmax (%/ms)	0.05 ± 0.16	0.13	0.91	−0.04 ± 0.15	0.19	0.89	<0.001	
SRe (%/ms)	0.009 ± 0.16	0.79	0.93	−0.02 ± 0.11	0.50	0.96	<0.001	
SRa (%/ms)	−0.12 ± 0.57	0.34	0.59	−0.08 ± 0.27	0.16	0.92	<0.001	

Results are reported as mean ± standard deviation

Abbreviations: Vmax left atrial maximal volume, LAEF left atrial total ejection fraction, LAPEF left atrial passive ejection fraction, LAAEF left atrial active ejection fraction, Smax maximum systolic strain, SRmax maximum systolic strain rate, SRe early-diastolic strain rate, SRa atrial diastolic strain rate, ICC intra-class correlation coefficient



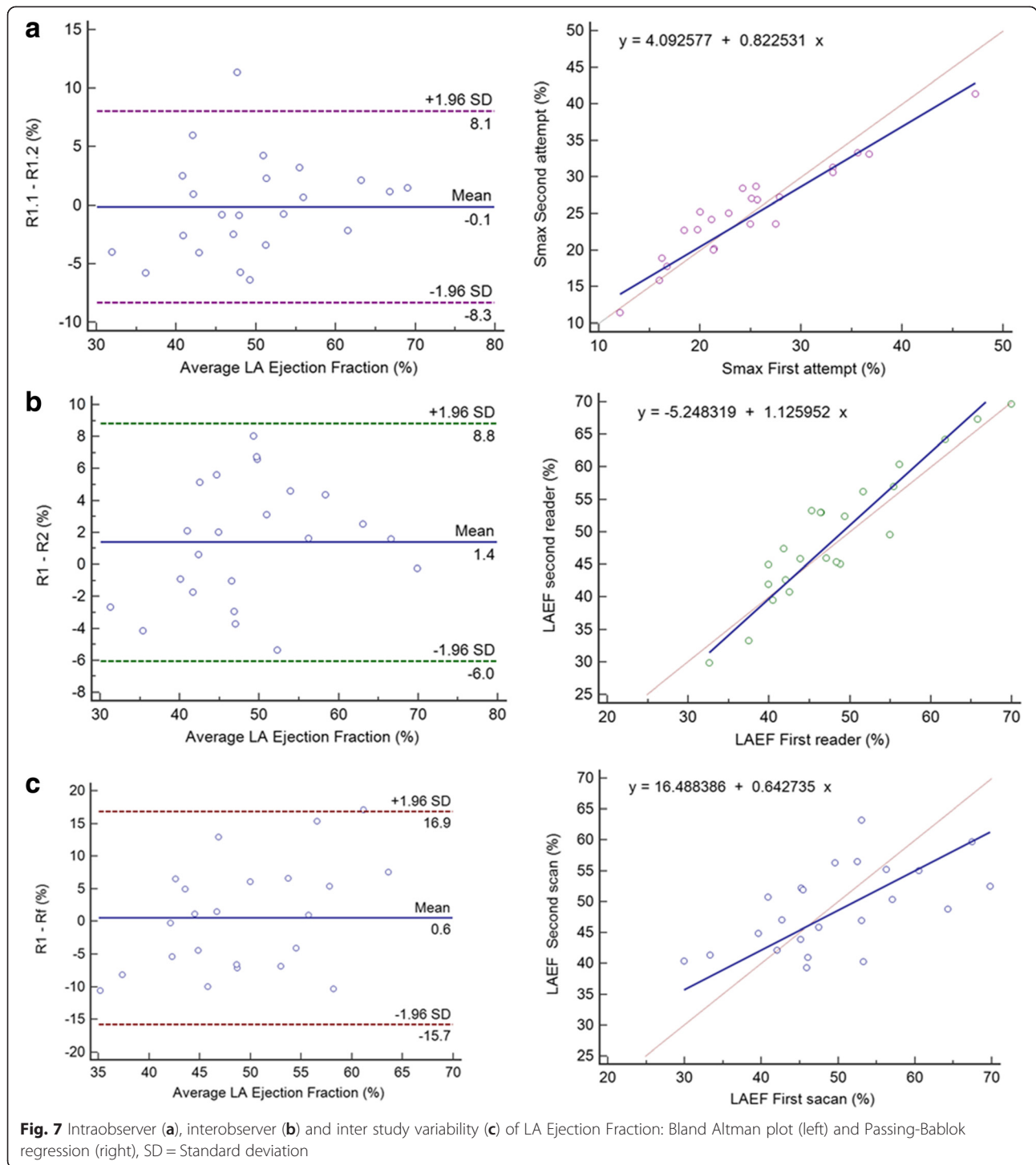


**Fig. 6** Intraobserver (a), interobserver (b) and inter study variability (c) of LA maximum Volume: Bland Altman plot (left) and Passing-Bablok regression (right), SD = Standard deviation

showed a good to excellent level of agreement for the variables analyzed for inter and intra reader reproducibility. The only exception was inter reader analysis of SRa (ICC; 0.54,  $p < 0.05$ ) that represents strain peak during LA contraction. The temporal resolution of ~25–35 ms may not allow accurate capture of the phenomenon, resulting in a lower level of agreement between analyses performed by two different readers. Data from at least one ultrasound intra-reader study showed a similar pattern, SRa was less reliable with an ICC of 0.491 [28].

To the best of our knowledge, this is the first study that performed analysis of LA test-retest- reproducibility of structural and functional parameters using Tissue tracking technique. Our results showed fair to good

agreement between all measurements (ICC; 0.44–0.82,  $p < 0.05$ ) and no significant systematic bias was observed. There are multiple factors which could influence the result of retest- reproducibility; technologist variability in performing the examination, radiologist intra-observer variability in each measurement, inter-instrumentation variability due to the utilization of different MR units and biological variability in consequence of patient changing health status between the two examinations. We had an excellent intra- reader agreement; our sample was composed only by individuals who had the exam performed at the same center (Johns Hopkins University, Baltimore) and using the same CMR scanner. Moreover, the short period of time between the two scans  $12 \pm 7$  days (range, 7–28 days)



may reduce the contribution of biological variability in LA parameters assessed in this study. The studies were performed by technicians who had received extensive training in the standard MESA protocol; this is more close to the clinical scenario, in which a follow up exam is more likely to be performed by a different technician. Taking into consideration, the

additional sources of variability, the lower level of agreement in the inter study analysis when compared with intra and inter reader analyses is understandable. The assessment of inter study variability is essential in the clinical scenario where the same exam is performed on a patient at different times to assess, for instance, the effect of one therapy.

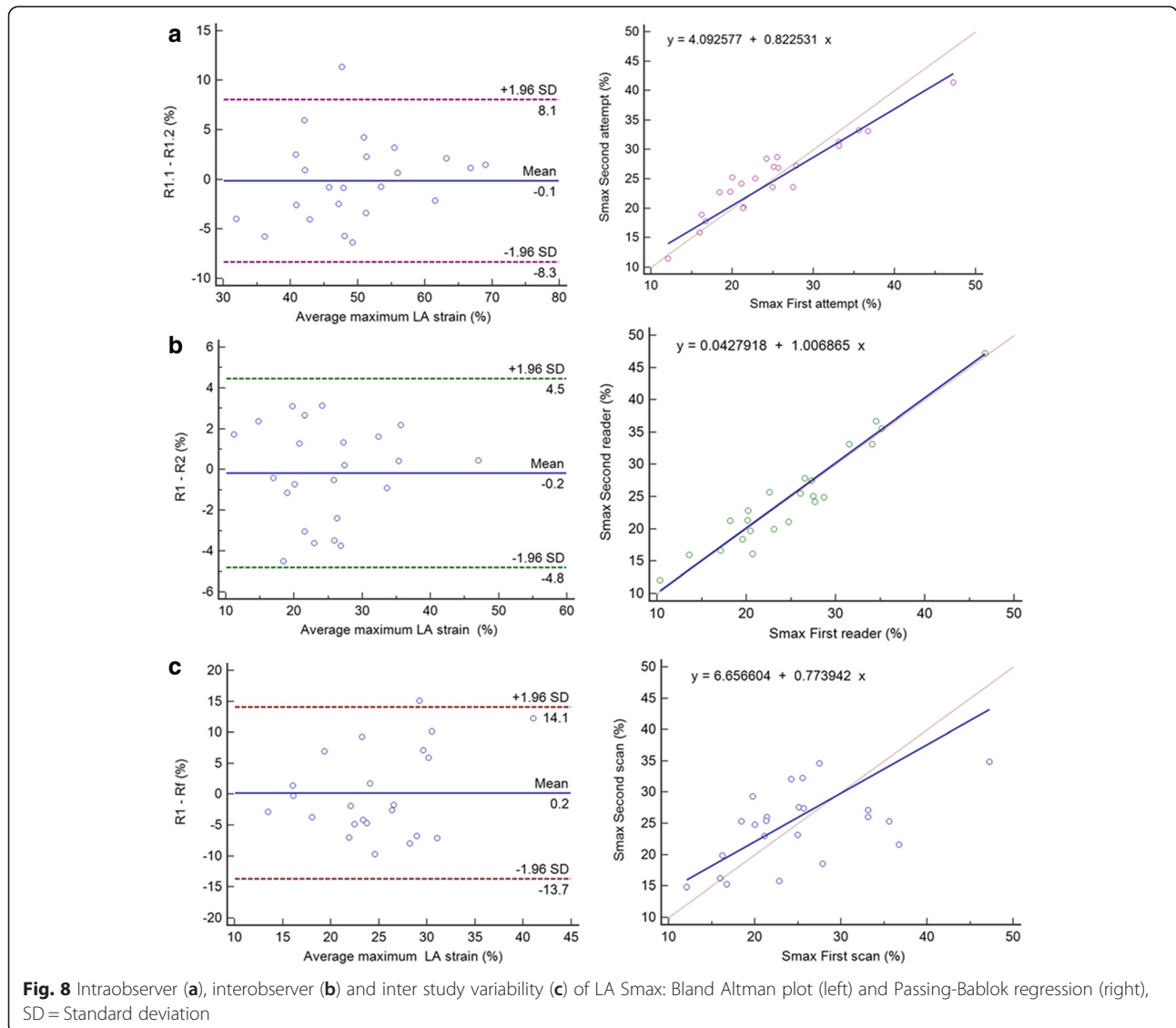
**Table 5** MTT test-retest reproducibility for CMR left atrium measurement ( $n = 22$ )

LA parameter	Difference (mean $\pm$ SD)	$p$	ICC	$\rho$	SEM	SDC
Vmax (ml)	-2.13 $\pm$ 11.52	0.20	0.80	<0.001	5.15	14.28
LAEF (%)	0.58 $\pm$ 8.31	0.42	0.54	0.005	5.76	15.95
LAPEF (%)	0.27 $\pm$ 6.22	0.99	0.48	0.01	4.49	12.44
LAAEF (%)	0.71 $\pm$ 7.77	0.24	0.57	0.002	5.09	14.12
Smax (%)	0.23 $\pm$ 7.09	0.84	0.60	0.001	4.49	12.43
SRmax (%/ms)	0.006 $\pm$ 0.29	0.72	0.48	0.01	0.21	0.59
SRe (%/ms)	-0.11 $\pm$ 0.34	0.16	0.63	<0.001	0.20	0.57
SRa (%/ms)	-0.02 $\pm$ 0.59	0.95	0.58	0.002	0.38	1.05

Results are reported as mean  $\pm$  standard deviation  
 Abbreviations: *Vmax* left atrial maximal volume, *LAEF* left atrial total ejection fraction, *LAPEF* left atrial passive ejection fraction, *LAAEF* left atrial active ejection fraction, *Smax* maximum systolic strain, *SRmax* maximum systolic strain rate, *SRe* early-diastolic strain rate, *SRa* atrial diastolic strain rate, *ICC* intra-class correlation coefficient, *SEM* standard error of measurement, *SDC* smallest detectable change

**Limitations**

The focus of CMR is most commonly the acquisition of LV images rather than LA images, as was the case in our study, resulting in some cases with poor LA image quality, in which it is challenging to accurately and reproducibly segment the LA both manually and by MTT. We had technical issues in 3 cases: i) Short axis image did not cover the entire LA; ii) Marked aorta overriding in four Chamber View and significant flow artifacts; iii) Bad slice orientation. Another limitation of this study is the relatively small number of subjects used for assessment of variability. While the sample size is typical for test-retest studies, we believe that the strength of the study could have improved further with a larger sample size.



## Conclusions

In conclusion, high spatial resolution MRI images provide for accurate LA chamber delineation, MTT derived biplane LA structure and function analysis is fairly accurate, less time consuming, reproducible and could potentially be a valuable tool for clinicians.

## Competing interests

The authors declare that they have no competing interests.

## Authors' contributions

MZ and LC: study design, data analysis and interpretation, manuscript drafting. MH, AO and COW: study design, data interpretation, critical manuscript revision. EHC: study design, data analysis and interpretation, critical manuscript revision. DAB and JACL: study design, data acquisition and interpretation, critical manuscript revision. BAV: study design, data acquisition and interpretation, manuscript drafting. All authors read and approved the final manuscript.

## Acknowledgements

This research was supported by contracts N01-HC-95159, N01-HC-95160, N01-HC-95161, N01-HC-95162, N01-HC-95163, N01-HC-95164, N01-HC-95165, N01-HC-95166, N01-HC-95167, N01-HC-95168 and N01-HC-95169 from the National Heart, Lung, and Blood Institute and by grants UL1-TR-000040 and UL1-TR-001079 from NCRR. The authors thank the other investigators, the staff, and the participants of the MESA study for their valuable contributions. A full list of participating MESA investigators and institutions can be found at [HTTP://WWW.MESA-NHLBI.ORG](http://www.MESA-NHLBI.ORG).

## Author details

<sup>1</sup>MR 110, Radiology, Johns Hopkins University, Baltimore, MD 21287, USA. <sup>2</sup>Oslo University Hospital and University of Oslo, Oslo, Norway. <sup>3</sup>National Institutes of Health, Bethesda, MD, USA.

Received: 3 January 2015 Accepted: 9 June 2015

Published online: 01 July 2015

## References

- Abhayaratna WP, Seward JB, Appleton CP, Douglas PS, Oh JK, Tajik AJ, Tsang TS. Left atrial size: physiologic determinants and clinical applications. *J Am Coll Cardiol*. 2006;47(12):2357–63. doi:10.1016/j.jacc.2006.02.048.
- Roelandt J. The increasing importance of left atrial size assessment. *J Cardiovasc Med (Hagerstown, Md)*. 2011; 12(2):147. doi:10.2459/JCM.0b013e3283430a20.
- Tsang TS, Barnes ME, Gersh BJ, Bailey KR, Seward JB. Left atrial volume as a morphophysiological expression of left ventricular diastolic dysfunction and relation to cardiovascular risk burden. *Am J Cardiol*. 2002;90(12):1284–9.
- Yang WJ, Shim CY, Kim YJ, Kim SA, Rhee SJ, Choi EY, Choi D, Jang Y, Chung N, Cho SY, Ha JW. Left atrial volume index: a predictor of adverse outcome in patients with hypertrophic cardiomyopathy. *J Am Soc Echocardiogr*. 2009;22(12):1338–43. doi:10.1016/j.echo.2009.09.016.
- Maceira AM, Cosin-Sales J, Roughton M, Prasad SK, Pennell DJ. Reference left atrial dimensions and volumes by steady state free precession cardiovascular magnetic resonance. *J Cardiovasc Magn Reson*. 2010;12:65. doi:10.1186/1532-429x-12-65.
- Lang RM, Bierig M, Devereux RB, Flachskampf FA, Foster E, Pellikka PA, Picard MH, Roman MJ, Seward J, Shanewise JS, Solomon SD, Spencer KT, Sutton MS, Stewart WJ. Recommendations for chamber quantification: a report from the American Society of Echocardiography's Guidelines and Standards Committee and the Chamber Quantification Writing Group, developed in conjunction with the European Association of Echocardiography, a branch of the European Society of Cardiology. *J Am Soc Echocardiogr*. 2005;18(12):1440–63. doi:10.1016/j.echo.2005.10.005.
- Vizzardi E, D'Aloia A, Rocco E, Lupi L, Rovetta R, Quinzani F, Bontempi L, Curnis Md A, Dei Cas L. How should we measure left atrium size and function? *J Clin Ultrasound*. 2012;40(3):155–66. doi:10.1002/jcu.21871.
- Hudsmith LE, Petersen SE, Francis JM, Robson MD, Neubauer S. Normal human left and right ventricular and left atrial dimensions using steady state free precession magnetic resonance imaging. *J Cardiovasc Magn Reson*. 2005;7(5):775–82.
- Tee M, Noble JA, Bluemke DA. Imaging techniques for cardiac strain and deformation: comparison of echocardiography, cardiac magnetic resonance and cardiac computed tomography. *Exp Rev Cardiovasc Ther*. 2013;11(2):221–31. doi:10.1586/erc.12.182.
- Bild DE, Bluemke DA, Burke GL, Detrano R, Diez Roux AV, Folsom AR, Greenland P, Jacob DR Jr, Kronmal R, Liu K, Nelson JC, O'Leary D, Saad MF, Shea S, Szklo M, Tracy RP. Multi-ethnic study of atherosclerosis: objectives and design. *Am J Epidemiol*. 2002;156(9):871–81.
- Habibi M, Chahal H, Opdahl A, Gjesdal O, Helle-Valle TM, Heckbert SR, McClelland R, Wu C, Shea S, Hundley G, Bluemke DA, Lima JA. Association of CMR-measured LA function with heart failure development: results from the MESA study. *JACC Cardiovasc Imaging*. 2014;7(6):570–9. doi:10.1016/j.jcmg.2014.01.016.
- Ogawa K, Hozumi T, Sugioka K, Matsumura Y, Nishiura M, Kanda R, Abe Y, Takemoto Y, Yoshiyama M, Yoshikawa J. Usefulness of automated quantitation of regional left ventricular wall motion by a novel method of two-dimensional echocardiographic tracking. *Am J Cardiol*. 2006;98(11):1531–7. doi:10.1016/j.amjcard.2006.06.060.
- Imai M, Venkatesh BA, Samiei S, Donekal S, Habibi M, Armstrong AC, Heckbert SR, Wu CO, Bluemke DA, Lima JA. Multi-ethnic study of atherosclerosis: association between left atrial function using tissue tracking from Cine MR imaging and myocardial fibrosis. *Radiology*. 2014; 131971. doi:10.1148/radiol.14131971.
- Van Beeumen K, Duytschaever M, Tavernier R, Van de Veire N, De Sutter J. Intra- and interatrial asynchrony in patients with heart failure. *Am J Cardiol*. 2007;99(1):79–83. doi:10.1016/j.amjcard.2006.07.066.
- Ludbrook J. Linear regression analysis for comparing two measurers or methods of measurement: but which regression? *Clin Exp Pharmacol Physiol*. 2010;37(7):692–9. doi:10.1111/j.1440-1681.2010.05376.x.
- Bland JM, Altman DG. Statistical methods for assessing agreement between two methods of clinical measurement. *Lancet*. 1986;1(8476):307–10.
- Weir JP. Quantifying test-retest reliability using the intraclass correlation coefficient and the SEM. *J Strength Cond Res*. 2005;19(1):231–40. doi:10.1519/15184.1.
- Grothues F, Smith GC, Moon JC, Bellenger NG, Collins P, Klein HU, Pennell DJ. Comparison of interstudy reproducibility of cardiovascular magnetic resonance with two-dimensional echocardiography in normal subjects and in patients with heart failure or left ventricular hypertrophy. *Am J Cardiol*. 2002;90(1):29–34.
- Takagi Y, Ehara S, Okuyama T, Shirai N, Yamashita H, Sugioka K, Kitamura H, Ujino K, Hozumi T, Yoshiyama M. Comparison of determinations of left atrial volume by the biplane area-length and Simpson's methods using 64-slice computed tomography. *J Cardiol*. 2009;53(2):257–64. doi:10.1016/j.jjcc.2008.11.012.
- Sievers B, Kirchberg S, Addo M, Bakan A, Brandts B, Trappe HJ. Assessment of left atrial volumes in sinus rhythm and atrial fibrillation using the biplane area-length method and cardiovascular magnetic resonance imaging with TrueFISP. *J Cardiovasc Magn Reson*. 2004;6(4):855–63.
- Harrild DM, Han Y, Geva T, Zhou J, Marcus E, Powell AJ. Comparison of cardiac MRI tissue tracking and myocardial tagging for assessment of regional ventricular strain. *Int J Cardiovasc Imaging*. 2012;28(8):2009–18. doi:10.1007/s10554-012-0035-3.
- Nacif MS, Barranhas AD, Turbey E, Marchiori E, Kawel N, Mello RA, Falcao RO, Oliveira AC Jr, Rochitte CE. Left atrial volume quantification using cardiac MRI in atrial fibrillation: comparison of the Simpson's method with biplane area-length, ellipse, and three-dimensional methods. *Diagn Interv Radiol*. 2013;19(3):213–20. doi:10.5152/dir.2012.002.
- Aurigemma GP, Gottdiener JS, Arnold AM, Chinali M, Hill JC, Kitzman D. Left atrial volume and geometry in healthy aging: the Cardiovascular Health Study. *Circ Cardiovasc Imaging*. 2009;2(4):282–9. doi:10.1161/circimaging.108.826602.
- Ujino K, Barnes ME, Cha SS, Langins AP, Bailey KR, Seward JB, Tsang TS. Two-dimensional echocardiographic methods for assessment of left atrial volume. *Am J Cardiol*. 2006;98(9):1185–8. doi:10.1016/j.amjcard.2006.05.040.
- Hor KN, Gottlieb WM, Carson C, Wash E, Cnota J, Fleck R, Wansapura J, Klimeczek P, Al-Khalidi HR, Chung ES, Benson DW, Mazur W. Comparison of magnetic resonance feature tracking for strain calculation with harmonic phase imaging analysis. *JACC Cardiovasc Imaging*. 2010;3(2):144–51. doi:10.1016/j.jcmg.2009.11.006.
- Schuster A, Morton G, Hussain ST, Jogiya R, Kutty S, Asress KN, Makowski MR, Bigalke B, Perera D, Beerbaum P, Nagel E. The intra-observer reproducibility of cardiovascular magnetic resonance myocardial feature

tracking strain assessment is independent of field strength. *Eur J Radiol.* 2013;82(2):296–301. doi:10.1016/j.ejrad.2012.11.012.

27. Singh A, Steadman CD, Khan JN, Horsfield MA, Bekele S, Nazir SA, Kanagala P, Masca NG, Clarysse P, McCann GP. Intertechnique agreement and interstudy reproducibility of strain and diastolic strain rate at 1.5 and 3 tesla: a comparison of feature-tracking and tagging in patients with aortic stenosis. *J Magn Reson Imaging.* 2014; doi:10.1002/jmri.24625
28. Oxborough D, George K, Birch KM. Intraobserver reliability of two-dimensional ultrasound derived strain imaging in the assessment of the left ventricle, right ventricle, and left atrium of healthy human hearts. *Echocardiography.* 2012;29(7):793–802. doi:10.1111/j.1540-8175.2012.01698.x.

**Submit your next manuscript to BioMed Central  
and take full advantage of:**

- Convenient online submission
- Thorough peer review
- No space constraints or color figure charges
- Immediate publication on acceptance
- Inclusion in PubMed, CAS, Scopus and Google Scholar
- Research which is freely available for redistribution

Submit your manuscript at  
[www.biomedcentral.com/submit](http://www.biomedcentral.com/submit)

