

POSTER PRESENTATION

Open Access

A steady-state method for computation of myocardial blood volume with the intravascular contrast agent Ablavar

Octavia Biris^{1,2*}, Brandon Benefield³, Kathleen R Harris³, Daniel C Lee^{3,4}

From 15th Annual SCMR Scientific Sessions
Orlando, FL, USA. 2-5 February 2012

Summary

Our proof of principle results show the feasibility of quantifying myocardial blood volume (MBV) with the intravascular contrast agent MS-325. For severe stenoses in a canine model, stenosis zone MBV was higher than remote MBV at rest, and lower than remote during vasodilation.

Background

In contrast echocardiography, absolute MBV in ml/100 g tissue has been shown to correlate with myocardial flow reserve at stress. Furthermore, MBV increases with severity of stenosis at rest, raising the possibility of detecting CAD without a stressor. We show proof of principle that MBV can be quantified by CMR using the intravascular contrast agent MS-325.

Methods

Protocol: We performed two rest-stress imaging experiments in an instrumented dog with a left circumflex coronary (LCX) artery stenosis created by hydraulic occluder. Severity of stenosis was evaluated by reduction in myocardial blood flow (MBF) measured by microspheres. During both experiments, the animal received 0.006 mmol/kg MS-325 (Ablavar) at rest and again during adenosine stress. T1 mapping was performed before and after contrast administration on a 1.5 T Espree (Siemens, Erlangen, Germany), with the MOLLI pulse sequence (short axis slice 8 mm, FOV 171 x 343 mm², TR 173 ms, effective TI 100 ms), before and after administration of contrast agent.

Image Processing

We have estimated the T1 changes in the myocardium and left ventricle blood pool through fitting of MOLLI signal to the Look-Locker regrowth curve ($\text{Signal}(t) = M_0 (1 - \exp(-t/T1^*))$) in MATLAB R2009a. MBV was calculated by signal difference maps, according to a slow water exchange model. The final quantitative MBV values were obtained after hematocrit, density and water exchange correction ($\text{MBV (ml/100g)} = 100 * (1/WCF) * 0.95 * (1 - \text{HCT}_{\text{ventricle}}) / (1 - \text{HCT}_{\text{capillary}}) * \text{MBV} (\%)$), with a ventricular hematocrit of 0.4, and capillary hematocrit 0.2). We assumed slow water exchange with a correction factor (WCF) of 4, based on previous experiments.

Results

Measurements of MBV and MBF over the whole myocardium, in the stenosis zone, and in a healthy remote zone are summarized in Table 1. The stenoses caused flow reduction at rest (36% and 25% reduction in MBF), associated with an increase in MBV in the stenosis zone compared to the remote zone (33% and 9.9%). At stress, average MBV increases, but stenosis zone MBV is lower than remote MBV (20.1% and 19.9%). For both experiments, MBV and MBF reserves (MVR and MFR) are in the range of published values.

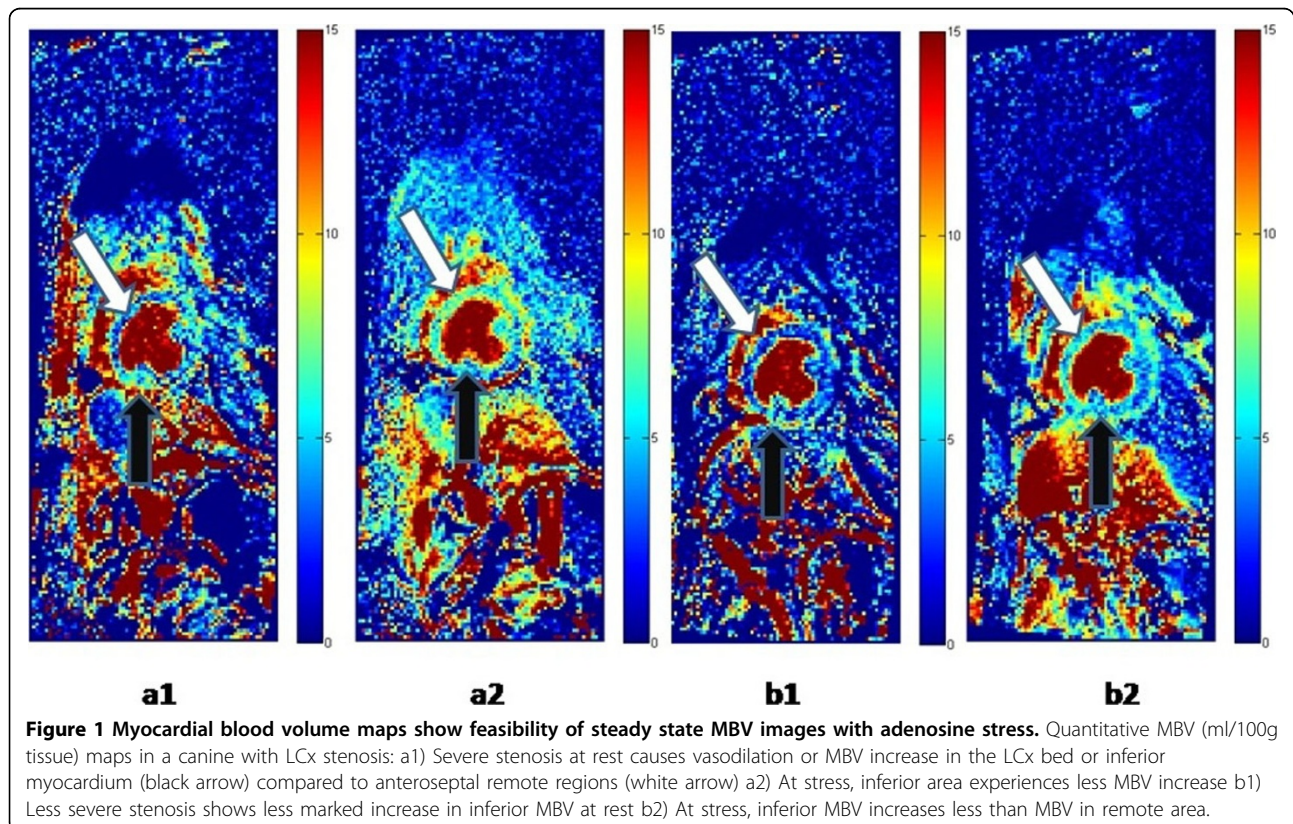
Conclusions

MBV can be quantified by CMR using the intravascular agent MS-325. Our MBV results mirror the expected vasodilation of microvessels distal to a resting epicardial stenosis, which results in a rest increase of MBV. Under maximal pharmacologic vasodilation, the limitation in epicardial flow results in lower MBV in the stenosis zone relative to the remote zone.

¹Radiology, Northwestern University, Chicago, IL, USA
Full list of author information is available at the end of the article

Table 1 MBV by MRI shows expected relationship to MBF by microspheres

Experiment 1					
	Rest		Stress		
	MBV (ml/100g)	% MBV increase (Stenosis-Remote)/Remote	MBV (ml/100g)	% MBV reduction (Stenosis-Remote)/Remote	MVR
Average	4.923		5.771		1.172
Stenosis	6.186	33.0	5.395	20.07	0.872
Remote	4.651		6.75		1.451
Flow from microspheres					
	Rest		Stress		
	MBF (ml/min/g)	% Flow reduction (Stenosis-Remote)/Remote	MBF (ml/min/g)	%Flow reduction (Stenosis-Remote)/Remote	MFR
Stenosis	0.961	35.98	0.714	838.495	0.742
Remote	1.502		8.469		5.638
Experiment 2					
	Rest		Stress		
	MBV (ml/100g)	%MBV increase (Stenosis-Remote)/Remote	MBV (ml/100g)	%MBV reduction (Stenosis-Remote)/Remote	MVR
Average	3.241		4.828		1.490
Stenosis	3.669	9.85	4.335	19.94	1.182
Remote	3.340		5.415		1.833
Flow from microspheres					
	Rest		Stress		
	MBF (ml/g/min)	%Flow reduction (Stenosis-Remote)/Remote	MBF (ml/g/min)	% Flow reduction (Stenosis-Remote)/Remote	MFR
Stenosis	0.687	25.239	0.908	627.226	1.322
Remote	0.918		6.414		8.583



Funding

None.

Author details

¹Radiology, Northwestern University, Chicago, IL, USA. ²Biomedical Engineering, Northwestern University, Evanston, IL, USA. ³Feinberg Cardiovascular Institute, Northwestern University, Chicago, IL, USA. ⁴Feinberg School of Medicine, Northwestern University, Chicago, IL, USA.

Published: 1 February 2012

doi:10.1186/1532-429X-14-S1-P49

Cite this article as: Biris *et al.*: A steady-state method for computation of myocardial blood volume with the intravascular contrast agent Ablavar. *Journal of Cardiovascular Magnetic Resonance* 2012 **14**(Suppl 1):P49.

**Submit your next manuscript to BioMed Central
and take full advantage of:**

- Convenient online submission
- Thorough peer review
- No space constraints or color figure charges
- Immediate publication on acceptance
- Inclusion in PubMed, CAS, Scopus and Google Scholar
- Research which is freely available for redistribution

Submit your manuscript at
www.biomedcentral.com/submit

