

WORKSHOP PRESENTATION

Open Access

Improved excitation fidelity in cardiac imaging with 2-spoke parallel excitation at 7 Tesla

S Schmitter^{1*}, L DelaBarre¹, X Wu¹, A Greiser², D Wang³, EJ Auerbach¹, J Vaughan¹, K Ugurbil¹, P Van de Moortele¹

From 16th Annual SCMR Scientific Sessions
San Francisco, CA, USA. 31 January - 3 February 2013

Background

Cardiac MRI may greatly benefit from ultra high field (UHF) providing higher SNR and intrinsic contrast. But shorter RF wavelength yields transmit B1 (B1+) heterogeneity and contrast variations through the heart. These can be addressed by parallel transmission (pTX) using multi-spoke RF pulses as previously shown in other organs. However, applying pTX in cardiac MRI at 7T is challenging and requires rapid, multi-channel ECG triggered B1+ calibration and ECG synchronized, motion-insensitive pTX acquisitions. In this initial work we investigate the impact of 2-spoke RF pulse design on cardiac imaging at 7T using a 16-channel pTX system

Methods

Healthy volunteers were imaged at 7T (Siemens, Erlangen) using a 16 channel pTX system with 16 channel transceiver body coil. All sequences were modified to enable both ECG triggering and full pTX capability. B1+ maps of each transmit (TX) channel were obtained using a fast estimation technique [1]. Each map was acquired within 484ms during diastole. 1- and 2-spoke pTX RF pulses (SINC shape, BWTP 4) were designed based on magnitude least squares (MLS) optimization [2] aiming at homogeneous excitation in manually drawn ROI. 3 excitations were compared: a) 1-spoke (= standard excitation) with non-optimized initial RF phase setting (equal amplitude), b) 1-spoke with optimized RF magnitude/phase and c) 2-spoke RF pulse with magnitude/phase optimized for each spoke and channel. To keep a constant RF duration 1-spoke pulses were set to 1600us duration while 2-spoke subpulses were set to 800us. Coefficient of variation (CV,

i.e. std/mean) in target ROI, total RF energy and peak energy per channel were computed for all RF pulses for same flip angle. Axial- and 4-chamber views were acquired using a CINE GRE sequence (resolution 1.2x1.2x5mm³; 1 spoke: TR/TE=41.7/2.5ms, 32 phases; 2 spoke: TR/TE=44.8/2.7ms, 29 phases)

Results

Fig.1a shows axial views of predicted B1+ maps and GRE cardiac images using 1- and 2-spokes RF pulses. Signal patterns are highly consistent with predictions based on measured B1+ maps, including in more posterior regions (e.g. see aorta; also Fig.1b). Homogeneity improved with 2-spoke, with CV dropping from 16.4% to 10.0% with only minor increase in RF energy (+12% - see Figure 2.1). Fidelity improvement with 2- vs. 1-spoke pulses occurred especially close to the ROI edges and posteriorly. Fig. 1b shows GRE images obtained with 2-spoke excitation in 4-chamber view at different cycle phases. 1+2 spokes acquisition in 4 chamber view resulted in higher residual inhomogeneity and higher RF compared to axial views (Figure 2), likely due to larger ROI size and/or orientation. Note the absence of significant excitation pattern change through the cycle.

Conclusions

pTX 2-spoke excitation in the heart at 7T is feasible, providing improved excitation fidelity, and reduced peak RF amplitude and reduced total RF energy.

Funding

P41 EB015894, S10RR026783, R21-EB009138, KECK Foundation.

¹Center for Magnetic Resonance Research, University of Minnesota, Minneapolis, MN, USA

Full list of author information is available at the end of the article

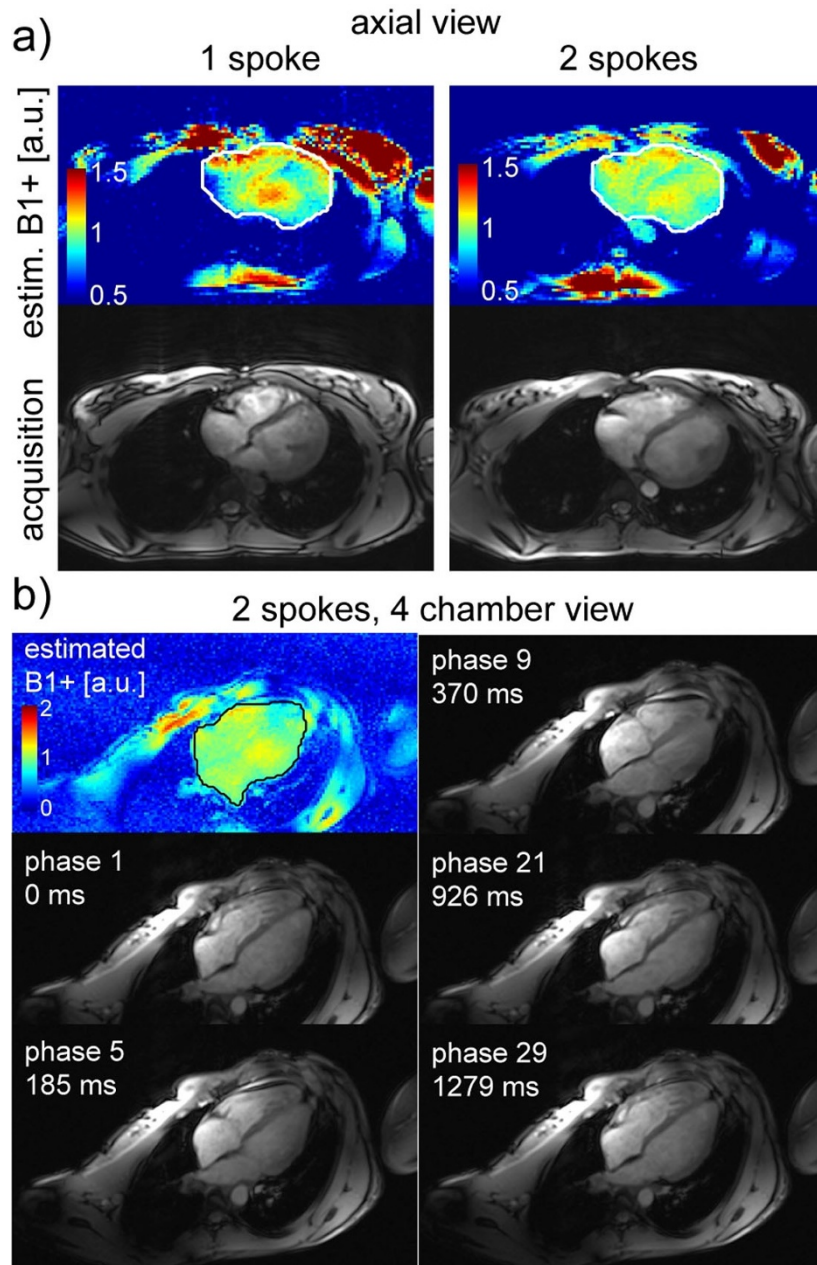


Figure 1 a) estimated B1+ maps for 1 and 2 spoke excitation (upper row) and last cardiac phase of corresponding CINE acquisition (lower row); b) 4 chamber view of different cardiac phases, acquired in CINE mode with 2 spokes at 7T. Upper left corner: corresponding B1+ estimation map (scale different to a) to appreciate overall pattern).

	axial view			4 chamber view		
	Non-optimized	1 spoke	2 spoke	2 spoke	1 spoke	2 spoke
CV	47.4%	16.4%	10.0%	10.4%	15.2%	12.3%
Energy	228%	100%	112%	100%	170%	170%
max(Energy per Channel)	48%	100%	60%	55%	129%	102%

Figure 2 Summarized results of excitation fidelity, RF energy and max. of energy per channel. Gray shaded columns correspond to Fig.1.

Author details

¹Center for Magnetic Resonance Research, University of Minnesota, Minneapolis, MN, USA. ²Siemens Healthcare Sector, Erlangen, Bavaria, Germany. ³Siemens Medical Solutions USA, Inc.; Center for Magnetic Resonance Research, University of Minnesota, Minneapolis, MN, USA.

Published: 30 January 2013

References

1. Van de Moortele: *ISMRM* 2009.
2. Setsompop, *et al.*: *MRM* 2008.

doi:10.1186/1532-429X-15-S1-W1

Cite this article as: Schmitter *et al.*: Improved excitation fidelity in cardiac imaging with 2-spoke parallel excitation at 7 Tesla. *Journal of Cardiovascular Magnetic Resonance* 2013 15(Suppl 1):W1.

**Submit your next manuscript to BioMed Central
and take full advantage of:**

- Convenient online submission
- Thorough peer review
- No space constraints or color figure charges
- Immediate publication on acceptance
- Inclusion in PubMed, CAS, Scopus and Google Scholar
- Research which is freely available for redistribution

Submit your manuscript at
www.biomedcentral.com/submit

