

POSTER PRESENTATION

Open Access

The duration of interventricular septal displacement in patients with precapillary pulmonary hypertension as a potential marker of right ventricular dysfunction and pressure overload. A cardiac magnetic resonance study

Sophia-Anastasia Mouratoglou², Alexandros Kallifatidis^{1*}, George Giannakoulas², Julia Grapsa³, Georgia Pitsiou⁴, Ioannis Stanopoulos⁴, Stavros Hadjimiltiades², Haralambos Karvounis²

From 17th Annual SCMR Scientific Sessions
New Orleans, LA, USA. 16-19 January 2014

Background

Right ventricular (RV) pressure overload results in interventricular septal displacement (IVSD) towards left ventricle in patients with pulmonary arterial hypertension (PAH). There is however scarce data on the duration of IVSD during cardiac cycle as expressed by curvature duration index (CDi) and its potential role in the evaluation of PAH patients. The aim of our study is to reveal the potential value of CDi as a marker of RV function and pressure overload.

Methods

All patients underwent cardiac magnetic resonance (CMR, Avanto Siemens 1.5T). A routine set of LV and RV short-axis cines of 6 mm slice thickness, were acquired from base to apex using a breath-hold retrospective ECG-gated balanced steady state free precession (SSFP) sequence. CDi (duration of septal curvature configuration \times 100/cardiac cycle duration), left ventricular eccentricity index in end-systole (LVSei) and end-diastole (LVDei), left ventricular end-systolic (LVESarea) and end-diastolic area (LVEDarea), RV end-systolic (RVESarea) and end diastolic area (RVEDarea) were defined in the short-axis view in the level of papillary muscles. Interventricular septal curvature ratio (CR) was defined in the same level, at end-systole. The right ventricular wall thickness (RVWT) was assessed in the anterior

segment of RV. Tricuspid annular plane systolic excursion (CMR-TAPSE) was defined in the 4-chamber view. Right ventricular ejection fraction (RVEF) and RV end-systolic volume (RVESV) and end-diastolic volume (RVEDV) were obtained with the use of serial short axis cine-MRI views from base to the apex, according to Simpson's rule.

Results

Our study included 41 consecutive patients (33 women, mean age 45.6 ± 12.1 years) with precapillary pulmonary hypertension (29 with idiopathic PAH, 7 with PAH associated to congenital heart disease, 2 with PAH associated to connective tissue disease and 3 with chronic thromboembolic pulmonary hypertension). A direct linear correlation between CDi and CMR-TAPSE ($r = -0.464$, $p = 0.02$), CR ($r = -0.796$, $p < 0.001$), LVSei ($r = 0.802$, $p < 0.001$) and LVDei ($r = 0.6$, $p < 0.001$), LVE-Sarea (-0.364 , $p = 0.02$), LVEDarea (-0.538 , $p < 0.001$), RVEF (-0.484 , $p = 0.02$), RVESV (0.509 , $p = 0.01$), RVE-Sarea (0.538 , $p < 0.001$), RVEDarea (0.497 , $p = 0.02$), RVWT (0.447 , $p = 0.004$) was observed.

Conclusions

CDi is a potential non invasive simple marker for the evaluation of RV pressure overload and function in patients with precapillary pulmonary hypertension. Its prognostic significance remains to be established in further studies.

¹Department of Radiology, St. Luke's Hospital, Thessaloniki, Greece
Full list of author information is available at the end of the article

Table 1

	Bivariate correlation		
	mean \pm SD	r	p
CDI%	68.2 \pm 23.5		
CMR-TAPSE (cm)	1.46 \pm 0.45	-0.464	0.02
CR	0.61 \pm 0.19	-0.796	<0.001
LVSei	1.96 \pm 0.84	0.802	<0.001
LVDei	1.47 \pm 0.30	0.6	<0.001
LVESarea	13.98 \pm 5.35	-0.364	0.02
LVEDarea	27.49 \pm 7.44	-0.538	<0.001
RVEF	47.67 \pm 11.21	-0.484	0.02
RVESV	64.12 \pm 37.44	0.509	0.01
RVESarea	24.29 \pm 10.38	0.538	<0.001
RVEDarea	34.86 \pm 9.70	0.497	0.02
RWWT	0.65 \pm 1.18	0.447	0.004

doi:10.1186/1532-429X-16-S1-P240

Cite this article as: Mouratoglou *et al.*: The duration of interventricular septal displacement in patients with precapillary pulmonary hypertension as a potential marker of right ventricular dysfunction and pressure overload. A cardiac magnetic resonance study. *Journal of Cardiovascular Magnetic Resonance* 2014 **16**(Suppl 1):P240.

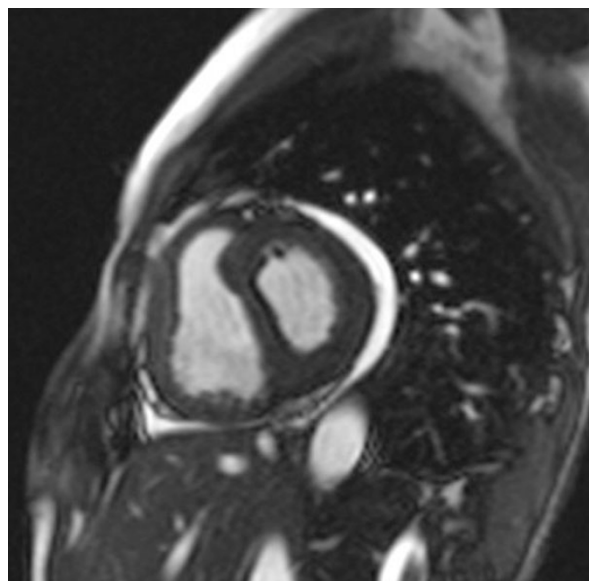


Figure 1 Basal Short-Axis SSFP image in end-systolic phase showing leftward septal displacement.

Funding

Hellenic Cardiological Society.

Authors' details

¹Department of Radiology, St. Luke's Hospital, Thessaloniki, Greece.
²1st Department of Cardiology, Aristotle University of Thessaloniki, AHEPA University Hospital, Thessaloniki, Greece. ³Department of Cardiovascular Sciences, Hammersmith Hospital, Imperial College NHS Trust, London, UK.
⁴Respiratory Failure Unit, Aristotle University of Thessaloniki, G. Papanikolaou Hospital, Thessaloniki, Greece.

Published: 16 January 2014

Submit your next manuscript to BioMed Central and take full advantage of:

- Convenient online submission
- Thorough peer review
- No space constraints or color figure charges
- Immediate publication on acceptance
- Inclusion in PubMed, CAS, Scopus and Google Scholar
- Research which is freely available for redistribution

Submit your manuscript at
www.biomedcentral.com/submit

 BioMed Central