

POSTER PRESENTATION

Open Access

Prediction of appropriate ICD-therapy using infarct heterogeneity from CMR in patients with coronary artery disease

Robert Jablonowski^{1*}, Uzma Chaudhry³, Henrik Engblom¹, Håkan Arheden¹, Einar Heiberg^{1,2}, Rasmus Borgquist³, Marcus Carlsson¹

From 18th Annual SCMR Scientific Sessions
Nice, France. 4-7 February 2015

Background

The heterogeneous peri-infarction zone surrounding the core infarct with cardiac magnetic resonance imaging (CMR) late gadolinium enhancement (LGE) has been linked to all-cause mortality in patients with coronary artery disease. Previously, the heterogeneity of fibrotic areas has been analyzed by threshold algorithms. We hypothesized that the heterogeneous peri-infarction zone is related to appropriate ICD-therapy in ischemic cardiomyopathy patients. Therefore, the purpose of this study was to investigate if 1) infarct heterogeneity can predict appropriate ICD-therapy and 2) evaluate which analysis method best depicts and quantifies the peri-infarction zone.

Methods

Ischemic cardiomyopathy patients with a primary prophylactic ICD who underwent CMR on a 1.5T scanner prior to ICD implantation were retrospectively included and divided into two groups (i) patients with appropriate ICD-therapy (anti-tachy pacing, shock or both) and (ii) patients with no ICD-therapy. A newly developed semi-automatic quantitative algorithm was used to evaluate the peri-infarction zone. This method was compared against a previously used threshold method with the total scar area defined as signal intensity (SI) > 2SD from remote myocardium, infarct core as SI > 3SD from remote and the peri-infarction zone defined as SI between 2 and 3SD from remote (Figure 1). Differences with a $p < 0.05$ were considered statistically significant.

Results

A total of 14 patients were included in the analysis, six patients with appropriate ICD-therapy (age 53 ± 11 years, 100% male, LV-EF $29 \pm 9\%$) and eight patients with no ICD-therapy (age 55 ± 14 years, 100% male, LV-EF $26 \pm 4\%$). The total scar burden was similar between both groups with and without ICD-therapy (49 ± 13 g vs 45 ± 8 g, $p = 0.1$).

The mean peri-infarction zone normalized to the total scar using the semi-quantitative algorithm was larger in the group with appropriate therapy ($34 \pm 1\%$) compared to the group with no ICD-therapy ($30 \pm 1\%$, $p = 0.03$), Figure 2. There was no difference between groups using the threshold algorithm for peri-infarction zone analysis ($11 \pm 2\%$ with appropriate ICD-therapy vs $10 \pm 2\%$ with no therapy, $p = 0.4$). There was a significant difference in peri-infarction zone normalized for total scar between the semi-automatic and threshold algorithm for patients with appropriate therapy ($p = 0.002$) and no therapy ($p = 0.0003$).

Conclusions

The peri-infarction zone quantified on CMR using a semi-automatic algorithm was larger in patients with appropriate ICD-therapy compared to patients with no ICD-therapy. The use of a threshold algorithm did, however, not separate the groups. Accurate quantification and characterization of the peri-infarction zone could aid in the identification of patients with infarction and at risk of ventricular arrhythmias and help to improve patient selection for primary prevention with ICD-therapy.

¹Cardiac MR group Lund, Dept of Clinical Physiology, Lund University, Lund, Sweden

Full list of author information is available at the end of the article

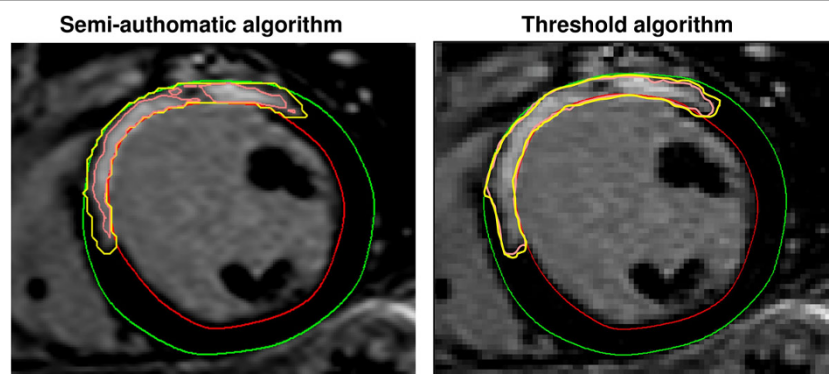


Figure 1 Representative short axis LGE-CMR images from one patient evaluated for peri-infarction zone with the semi-automatic algorithm (left panel) and threshold algorithm (right panel). The peri-infarction zone is defined as the area between the pink (infarct core) and yellow line. Red line=endocardium, green line=epicardium.

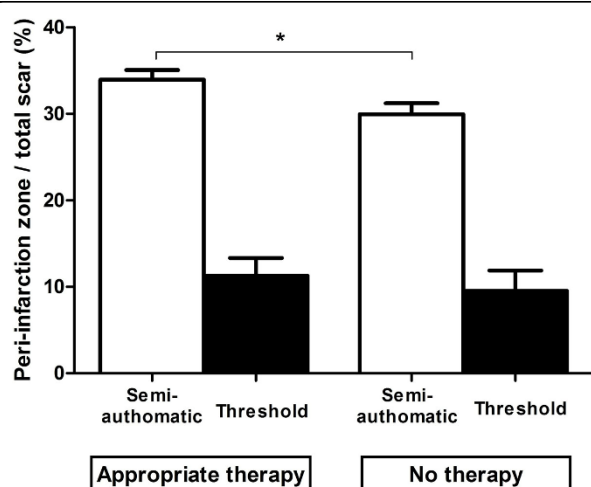


Figure 2 Quantification of peri-infarction zone normalized to total scar in patients with and without appropriate ICD-therapy using a semi-automatic algorithm (white columns) and a threshold algorithm based on standard deviations (black columns). The peri-infarction zone is significantly larger in patients with appropriate therapy compared to patients without therapy using the semi-automatic algorithm.

doi:10.1186/1532-429X-17-S1-P165

Cite this article as: Jablonowski et al.: Prediction of appropriate ICD-therapy using infarct heterogeneity from CMR in patients with coronary artery disease. *Journal of Cardiovascular Magnetic Resonance* 2015 **17** (Suppl 1):P165.

Funding

Lund University, Region of Scania.

Authors' details

¹Cardiac MR group Lund, Dept of Clinical Physiology, Lund University, Lund, Sweden. ²Dept. of Biomedical Engineering, Faculty of Engineering, Lund University, Lund, Sweden. ³Dept. of Cardiology, Arrhythmia Clinic, Skane University Hospital, Lund University, Lund, Sweden.

Published: 3 February 2015

Submit your next manuscript to BioMed Central and take full advantage of:

- Convenient online submission
- Thorough peer review
- No space constraints or color figure charges
- Immediate publication on acceptance
- Inclusion in PubMed, CAS, Scopus and Google Scholar
- Research which is freely available for redistribution

Submit your manuscript at
www.biomedcentral.com/submit

